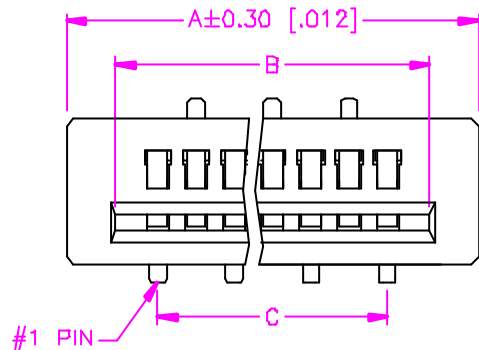


| REV. | DESCRIPTION | DATE          |
|------|-------------|---------------|
| —    | RELEASE     | Jun. 25, 2002 |
| 1    | P/N MODIFY  | Jul. 02, 2002 |
| 2    |             |               |



$$A = (\text{TOTAL NO. OF PINS}) \times 1.00 + 3.80$$

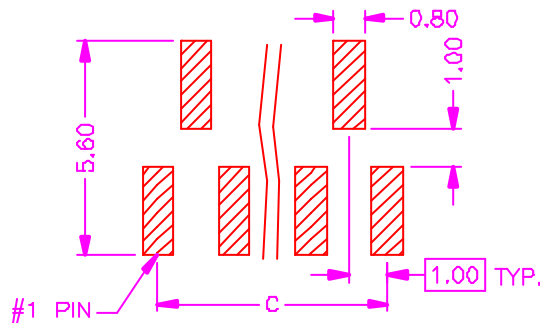
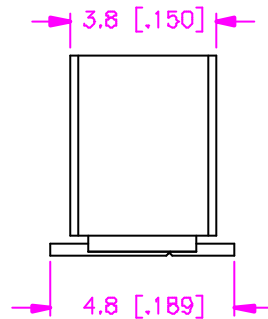
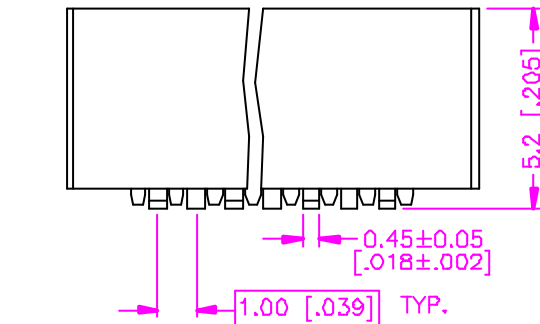
$$(\text{TOTAL NO. OF PINS}) \times 0.039 + 1.150$$

$$B = (\text{TOTAL NO. OF PINS}) \times 1.00 + 1.20$$

$$(\text{TOTAL NO. OF PINS}) \times 0.039 + 0.047$$

$$C = (\text{TOTAL NO. OF PINS} - 1) \times 1.00$$

$$(\text{TOTAL NO. OF PINS} - 1) \times 0.039$$



RECOMMEND P.C.B. LAYOUT  
TOP VIEW

## MATERIALS

1. HOUSING : HI.-TEMP. PLASTIC (UL 94V-0).
2. TERMINAL : COPPER ALLOY.

## SPECIFICATION

1. CURRENT RATING : 0.5 AMP. MAX.
2. DIELECTRIC WITHSTANDING VOLTAGE : 500V AC R.M.S. FOR ONE MINUTE.
3. INSULATION RESISTANCE : 500M OHMS MIN. AT 500V DC.
4. CONTACT RESISTANCE : 30m OHMS MAX.
5. OPERATING TEMPERATURE : -40°C TO +85°C.
6. MAX. PROCESSING TEMP. : 230°C FOR 30 ~ 60 SECONDS.

## ORDER INFORMATION :

55 - 2502 1 - \*\* W - T

SERIES CODE | NUMBER OF POSITIONS | TIN PLATING ON TERMINAL  
04 ~ 34 PINS | WHITE IN HOUSING COLOR

|                   |         |                   |                           |
|-------------------|---------|-------------------|---------------------------|
| TOLERANCE         |         | DRAWER            | <b>Astron</b>             |
| .0±.0.30 [.012]   |         | <i>SUB</i>        |                           |
| .00±.0.20 [.008]  |         | CHECK             | ASTRON TECHNOLOGY CORP.   |
| .000±.XXX         |         | <i>Katherine</i>  | NAME                      |
| .0000±.           |         | APP'D             | FPC CONNECTOR             |
| ANG.±3°           |         | <i>WJF&amp;LY</i> | 1.00mm PITCH SMT, NON-ZIF |
|                   |         | PRODUCT SPEC.     | DRAW NO.                  |
| UNITS : mm [inch] |         |                   | C355-2502                 |
| SCALE NONE        | SIZE A4 | SHEET 1 OF 1      | REV. B                    |
|                   |         |                   | 10015                     |