

ORDERING INFORMATION

6090XXX-0XX
 SERIES CODE FOLLOW NUMBER (SEE TABLE 1)
 SMT GOLD FLASH
 FEMALE NUMBER OF POSITIONS

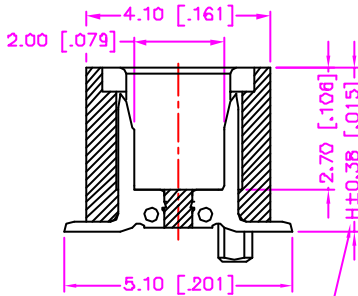
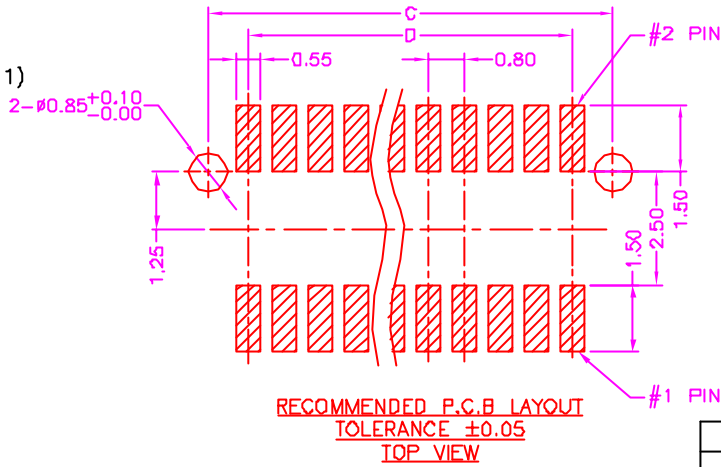
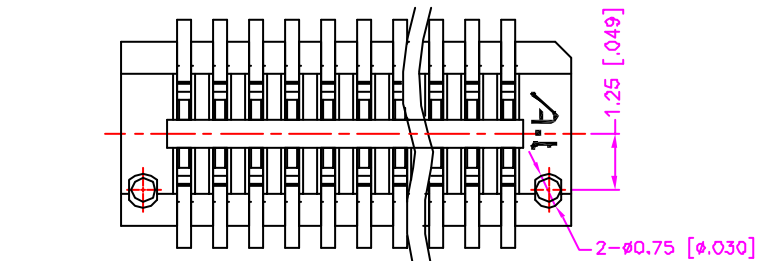
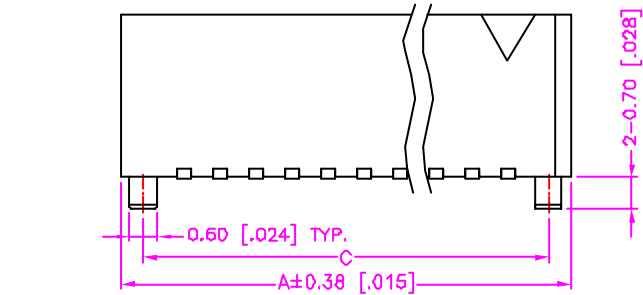
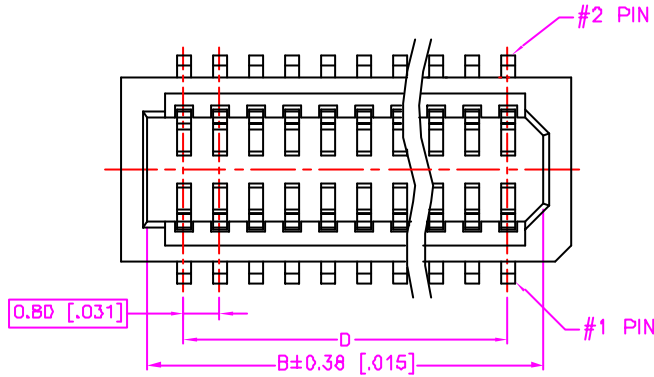
REV.	EDN NO.	DATE
—	RELEASE	Aug 05, 2002
B	02'D831	Aug 27, 2002
C	02'1015	Oct 21, 2002
D	02'1113	Nov 07, 2002
E	03'D330	Mar 27, 2003
F	P/N MODIFY	Jun. 13, 2003

MATERIALS

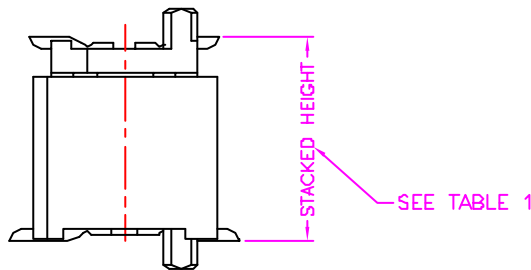
- HOUSING : HI-TEMP. PLASTIC (UL 94V-0).
- CONTACTS : COPPER ALLOY, GOLD PLATED OVER NICKEL. (t=0.30mm)

SPECIFICATIONS

- CURRENT RATING : 0.5 AMP. MAX.
- INSULATION RESISTANCE : 100M OHMS MIN AT 250V DC.
- DIELECTRIC WITHSTANDING VOLTAGE : 500V (r.m.s) AC AT 0.5mA FOR ONE MINUTE.
- CONTACT RESISTANCE: 20m OHMS MAX.
- OPERATING TEMPERATURE : -40 C TO +105 C.



SEE TABLE 1



100	41.80 [1.646]	40.90 [1.610]	41.00 [1.614]	39.20 [1.543]
90	37.80 [1.488]	36.90 [1.453]	37.00 [1.457]	35.20 [1.388]
80	33.80 [1.331]	32.90 [1.295]	33.00 [1.299]	31.20 [1.228]
70	29.80 [1.173]	28.90 [1.138]	29.00 [1.142]	27.20 [1.071]
60	25.80 [1.016]	24.90 [0.980]	25.00 [0.984]	23.20 [0.913]
50	21.80 [0.858]	20.90 [0.823]	21.00 [0.827]	19.20 [0.756]
40	17.80 [0.701]	16.90 [0.665]	17.00 [0.669]	15.20 [0.598]
38	17.00 [0.669]	16.10 [0.634]	16.20 [0.638]	14.40 [0.567]
36	16.20 [0.638]	15.30 [0.602]	15.40 [0.606]	13.60 [0.535]
34	15.40 [0.606]	14.50 [0.571]	14.60 [0.575]	12.80 [0.504]
32	14.60 [0.575]	13.70 [0.539]	13.80 [0.543]	12.00 [0.472]
30	13.80 [0.543]	12.90 [0.508]	13.00 [0.512]	11.20 [0.441]
28	13.00 [0.512]	12.10 [0.476]	12.20 [0.480]	10.40 [0.409]
26	12.20 [0.480]	11.30 [0.445]	11.40 [0.449]	9.60 [0.378]
24	11.40 [0.449]	10.50 [0.413]	10.60 [0.417]	8.80 [0.346]
22	10.60 [0.417]	9.70 [0.382]	9.80 [0.386]	8.00 [0.315]
20	9.80 [0.386]	8.90 [0.350]	9.00 [0.354]	7.20 [0.283]
18	9.00 [0.354]	8.10 [0.319]	8.20 [0.323]	6.40 [0.252]
16	8.20 [0.323]	7.30 [0.287]	7.40 [0.291]	5.60 [0.220]
14	7.40 [0.291]	6.50 [0.256]	6.60 [0.260]	4.80 [0.189]
12	6.60 [0.260]	5.70 [0.224]	5.80 [0.228]	4.00 [0.157]
10	5.80 [0.228]	4.90 [0.193]	5.00 [0.197]	3.20 [0.126]
Number Of Position	A	B	C	D

6090XXX-014	6090XXX-018	6.15 [0.242]	7.00 [0.276]	D TYPE
6090XXX-013	6090XXX-017	5.15 [0.203]	6.00 [0.236]	C TYPE
6090XXX-012	6090XXX-016	4.15 [0.163]	5.00 [0.197]	B TYPE
6090XXX-011	6090XXX-015	3.65 [0.144]	4.50 [0.177]	A TYPE
TUBE PACKAGE	TAPE PACKAGE	H	STACKED HEIGHT	NOTE
PART NO.				

TABLE 1

TOLERANCE .0=±0.38 [0.15] .00=±0.25 [0.10] .000=±.10 [0.04] .0000=±. ANG.=±5°	DRAWER <i>Katherine</i>	Astron ASTRON TECHNOLOGY CORP.
UNITS : mm [Inch]	CHECK <i>PUS</i>	
SCALE NONE	APP'D <i>L90N</i>	NAME B TO B 0.8PH SMT FEMALE
SIZE A4	PRODUCT SPEC. —	DRAW NO. R6090XXX-0XX
SHEET 1 OF 1	REV. F	