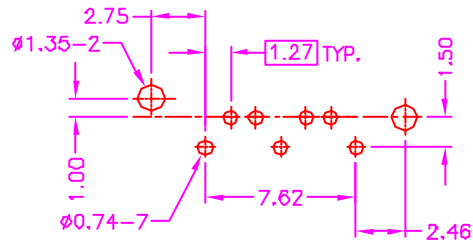
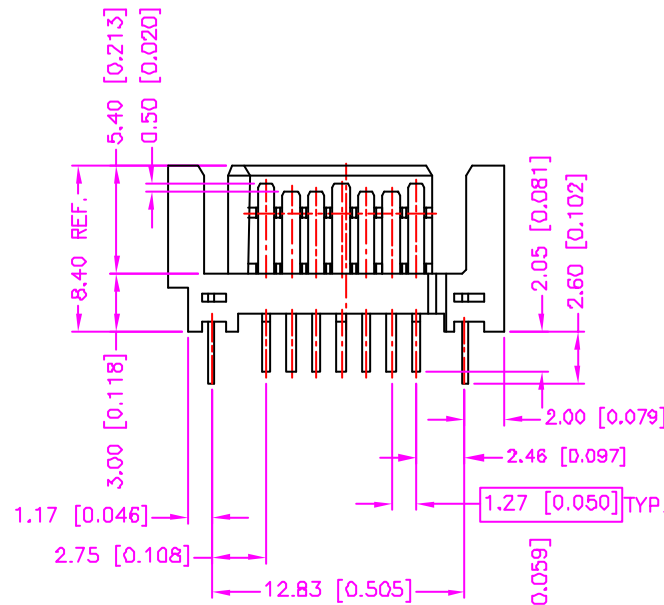
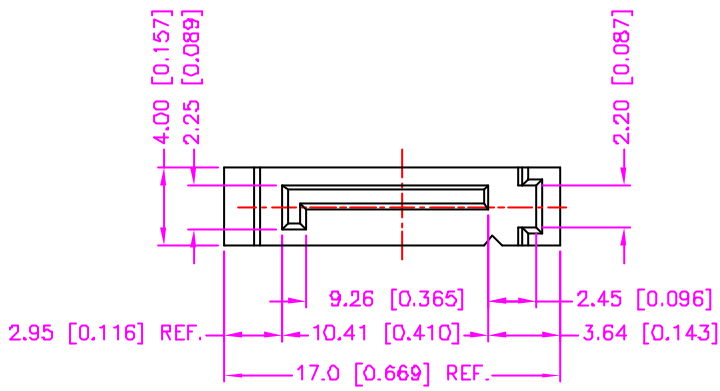


REV.	DESCRIPTION	DATE
—	RELEASE	Sep. 27, 2002
1	DRAW MODIFY	Dec. 05, 2002
2	DRAW MODIFY	Dec. 24, 2002



RECOMMEND P.C.B. LAYOUT
TOP VIEW

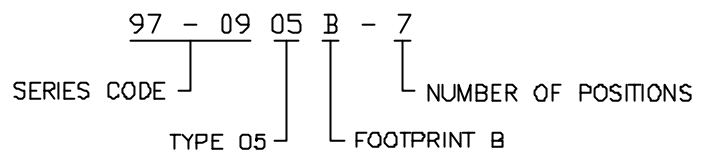
MATERIALS

1. HOUSING : THERMOPLASTIC (UL 94V-0), BLACK.
2. TERMINAL : COPPER ALLOY, GOLD PLATING ON CONTACT AREA, TIN/LEAD PLATING ON SOLDER TAIL. (t=0.25mm)
3. FORK : COPPER ALLOY, TIN/LEAD PLATING . (t=0.30mm)

SPECIFICATION

1. CURRENT RATING : 1.5 AMP. MAX.
2. DIELECTRIC WITHSTANDING VOLTAGE : 500V AC R.M.S. FOR ONE MINUTE.
3. INSULATION RESISTANCE : 1000M OHMS MIN. AT 500V DC.
4. OPERATING TEMPERATURE : -40°C TO +85°C.

ORDER INFORMATION :



TOLERANCE .0=±0.30 [.012] .00=±0.20 [.008] .000=±.XXX .0000=±. ANG.=±3°		DRAWER <i>Katherine</i>	 ASTRON TECHNOLOGY CORP.	
UNITS : mm [Inch]		CHECK <i>SUS</i>		NAME SERIAL ATA CONNECTOR
SCALE NONE		SIZE A4	APP'D <i>ALEX</i>	P.C.B. MOUNT VERTICAL, SIGNAL PLUG STRAIGHT, FOOTPRINT B
SCALE NONE		SIZE A4	PRODUCT SPEC. —	DRAW NO. C797-0906
SHEET 1 OF 1		REV. C	10018	