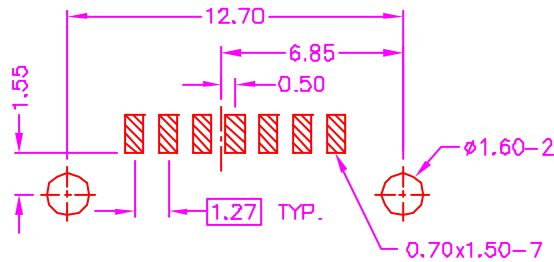
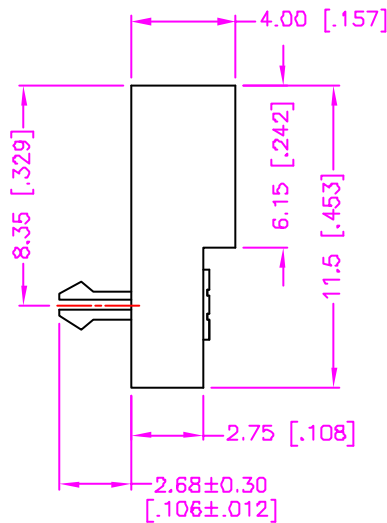
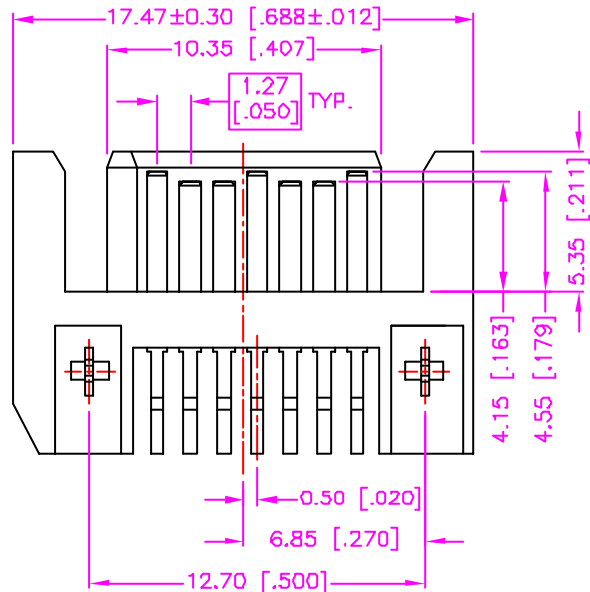
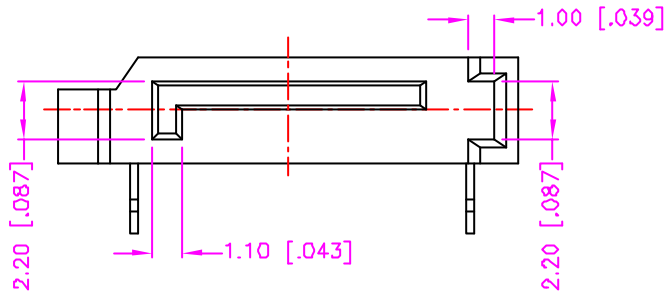


REV.	DESCRIPTION	DATE
—	RELEASE	Jun. 26, 2002
1	DRAW MODIFY	JUL 15, 2002
2		



**RECOMMEND P.C.B. LAYOUT  
TOP VIEW**

### MATERIALS

1. HOUSING : HI.-TEMP. PLASTIC (UL 94V-0), BLACK.
2. TERMINAL : PHOSPHOR BRONZE, GOLD PLATING ON CONTACT, TIN/LEAD PLATING ON SOLDER TAIL. (t=0.25mm)

### SPECIFICATION

1. CURRENT RATING : 1.5 AMP. MAX.
2. DIELECTRIC WITHSTANDING VOLTAGE : 500V AC R.M.S. FOR ONE MINUTE.
3. INSULATION RESISTANCE : 1000M OHMS MIN. AT 500V DC.
4. OPERATING TEMPERATURE : -25°C TO +85°C.
5. MAX. PROCESSING TEMP. : 230°C FOR 30 ~ 60 SECONDS.

### ORDER INFORMATION :

97 - 09 02 - 7

SERIES CODE

NUMBER OF POSITIONS

TYPE 02

TOLERANCE		DRAWER	 ASTRON TECHNOLOGY CORP.
.0=±0.30 [.012]		<i>Katherine</i>	
.00=±0.20 [.008]		CHECK	NAME SERIAL ATA CONNECTOR P.C.B. MOUNT SMT R/A, SIGNAL PLUG
.000=±.XXX		<i>LFOK</i>	
.0000=±.		APP'D	DRAW NO. C797-0902
ANG.=±3°		<i>FUS</i>	
		PRODUCT SPEC.	DRAW NO. C797-0902
UNITS : mm [inch]		—	
SCALE	SIZE	SHEET	REV.
NGNE	A4	1 OF 1	B
08001/1001B			