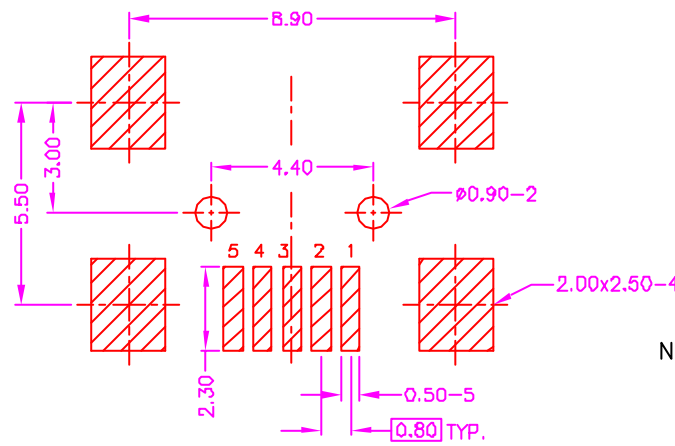
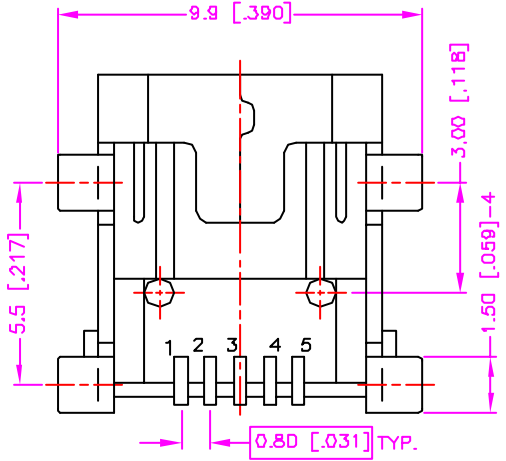
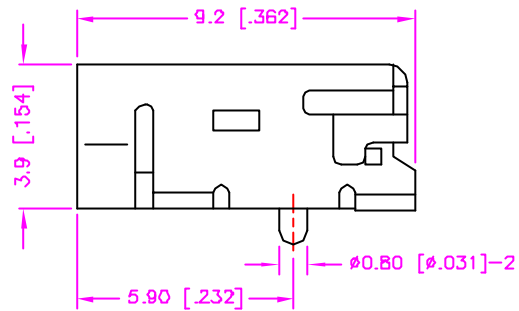
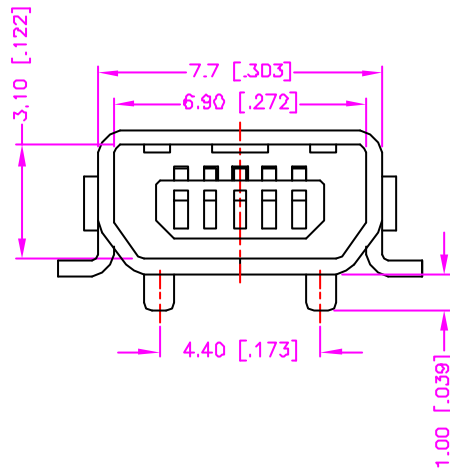


| REV. | DESCRIPTION | DATE |
|------|-------------|---------------|
| — | RELEASE | Jun. 27, 2002 |
| 1 | | |
| 2 | | |



RECOMMEND P.C.B. LAYOUT
TOP VIEW

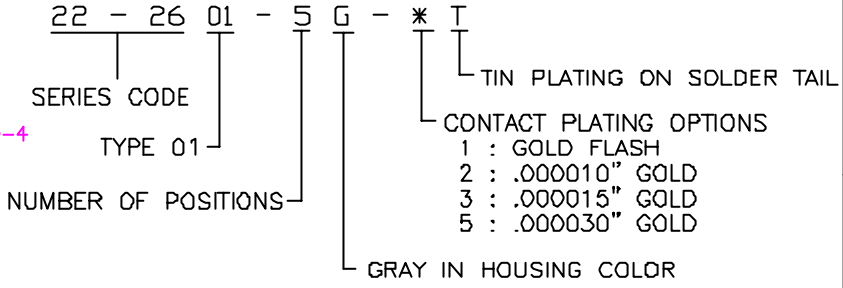
MATERIALS

1. HOUSING : HI.-TEMP. PLASTIC (UL 94V-0)
2. TERMINAL : COPPER ALLOY. (t=0.25mm)
3. SHELL : COPPER ALLOY, TIN PLATING. (t=0.40mm)

SPECIFICATION

1. CURRENT RATING : 1 AMP. MAX.
2. DIELECTRIC WITHSTANDING VOLTAGE : 100V AC R.M.S. FOR ONE MINUTE.
3. INSULATION RESISTANCE : 100M OHMS MIN. AT 100V DC.
4. CONTACT RESISTANCE : 50m OHMS MAX.
5. OPERATING TEMPERATURE : 0°C TO +50°C.
6. DURABILITY : 5000 CYCLES.
7. MATING FORCE : 3.5kgs MAX.
8. UNMATING FORCE : 0.7kgs MIN.
9. MAX. PROCESSING TEMP. : 230°C FOR 30 ~ 60 SECONDS.

ORDER INFORMATION :



| | | |
|------------------------------------------------------------------------------------|----------------------------|------------------------------------|
| TOLERANCE .0±.030 [.012] .00±.020 [.008] .000±.XXX .0000±. ANG.=±3° | DRAWER <i>Katherlin</i> | ASTRON TECHNOLOGY CORP. |
| | CHECK <i>SUE</i> | |
| | APP'D <i>WYBYLW</i> | DRAW NO. C622-2601 |
| UNITS : mm [inch] | PRODUCT SPEC. | |
| SCALE NONE SIZE A4 | SHEET 1 OF 1 REV. A | 20002 |