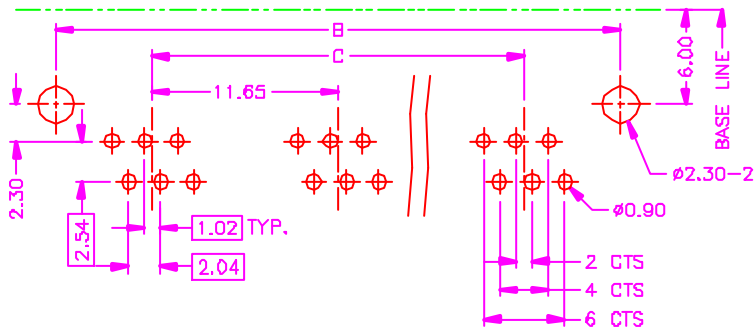
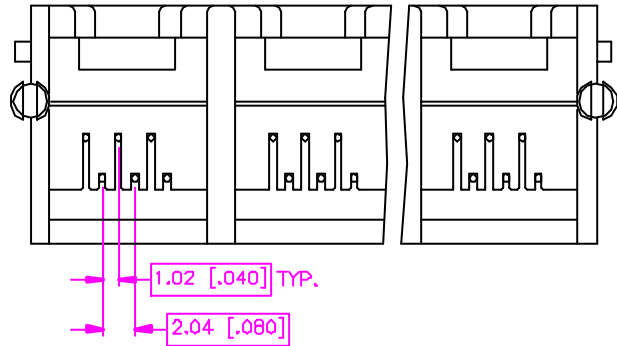
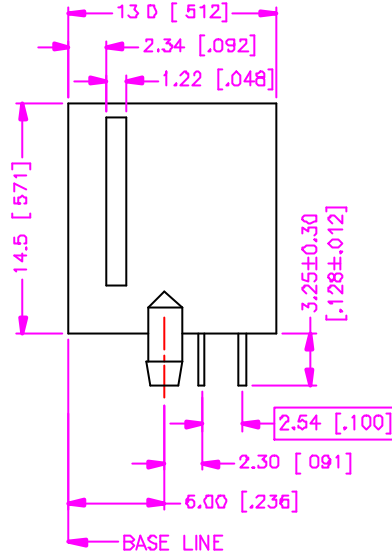
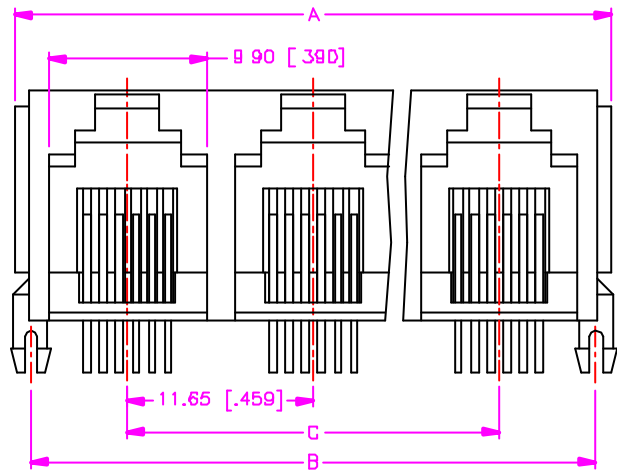


REV.	DESCRIPTION	DATE
—	RELEASE	Apr. 18, 2002
1		
2		



RECOMMEND P.C.B. LAYOUT
BOTTOM VIEW

$$A = (11.65 \times P) + 2.50 \pm 0.30$$

$$= (.459 \times P) + .098 \pm .012$$

$$B = (11.65 \times P) + 0.50 \pm 0.20$$

$$= (.459 \times P) + .020 \pm .008$$

$$C = 11.65 \times (P - 1) \pm 0.20$$

$$= .459 \times (P - 1) \pm .008$$

P = NUMBER OF PORTS

MATERIALS

1. HOUSING : POLYESTER (UL 94V-0).
2. TERMINAL : $\phi 0.45$ mm PHOSPHOR BRONZE.

SPECIFICATION

1. CURRENT RATING : 1.5 AMP. MAX
2. DIELECTRIC WITHSTANDING VOLTAGE :
1000V AC R.M.S. FOR ONE MINUTE.
3. INSULATION RESISTANCE : 500M OHMS MIN.
AT 500V DC
4. CONTACT RESISTANCE : 30m OHMS MAX.
5. OPERATING TEMPERATURE : -40°C TO $+70^{\circ}\text{C}$.
6. DURABILITY : 750 CYCLES.

ORDER INFORMATION :

17 - 31 04 - * 6* * - * G

SERIES CODE — TYPE 04 — NUMBER OF PORTS — POSITION & CONTACT — HOUSING COLOR OPTIONS — GOLD PLATING ON SOLDER TAIL — CONTACT PLATING OPTIONS

62 : 6P2C
64 : 6P4C
66 : 6P6C

1 : GOLD FLASH
2 : .000010" GOLD
3 : .000015" GOLD
5 : .000030" GOLD
6 : .000050" GOLD

G : GRAY
BLANK : BLACK

TOLERANCE .0±.0.30 [.012] .00±.0.20 [.008] .000±.XXX .0000± ANG.=±3°	DRAWER <i>Kathertin</i>	 Astron ASTRON TECHNOLOGY CORP.
	CHECK <i>Sue</i>	
 UNITS : mm [inch]	APP'D <i>Wiseby</i>	DRAW NO. C564-3104
	PRODUCT SPEC. —	SCALE NONE SIZE A4 SHEET 1 OF 1 REV. A