

REV.	DESCRIPTION	DATE
—	RELEASE	Dec. 24, 2002
1	P/N MODIFY	Jan. 02, 2003
2	DRAW MODIFY	Mar. 11, 2003
3	DRAW MODIFY	Oct. 30, 2003

MATERIALS

1. HOUSING : THERMOPLASTIC (UL 94V-0), WHITE.
2. TERMINAL : COPPER ALLOY.
3. SHELL : STEEL, NICKEL PLATING.
4. BOARDLOCK : COPPER ALLOY, TIN PLATING.

SPECIFICATION

1. CURRENT RATING : 1.5 AMP. MAX.
2. DIELECTRIC WITHSTANDING VOLTAGE : 500V AC R.M.S. FOR ONE MINUTE.
3. INSULATION RESISTANCE : 1000M OHMS MIN. AT 500V DC.
4. CONTACT RESISTANCE : 20m OHMS MAX.
5. OPERATING TEMPERATURE : 0°C TO +85°C.
6. MAX. PROCESSING TEMPERATURE : 230°C FOR 30 ~ 60 SECONDS. (HI.-TEMP. PLASTIC)

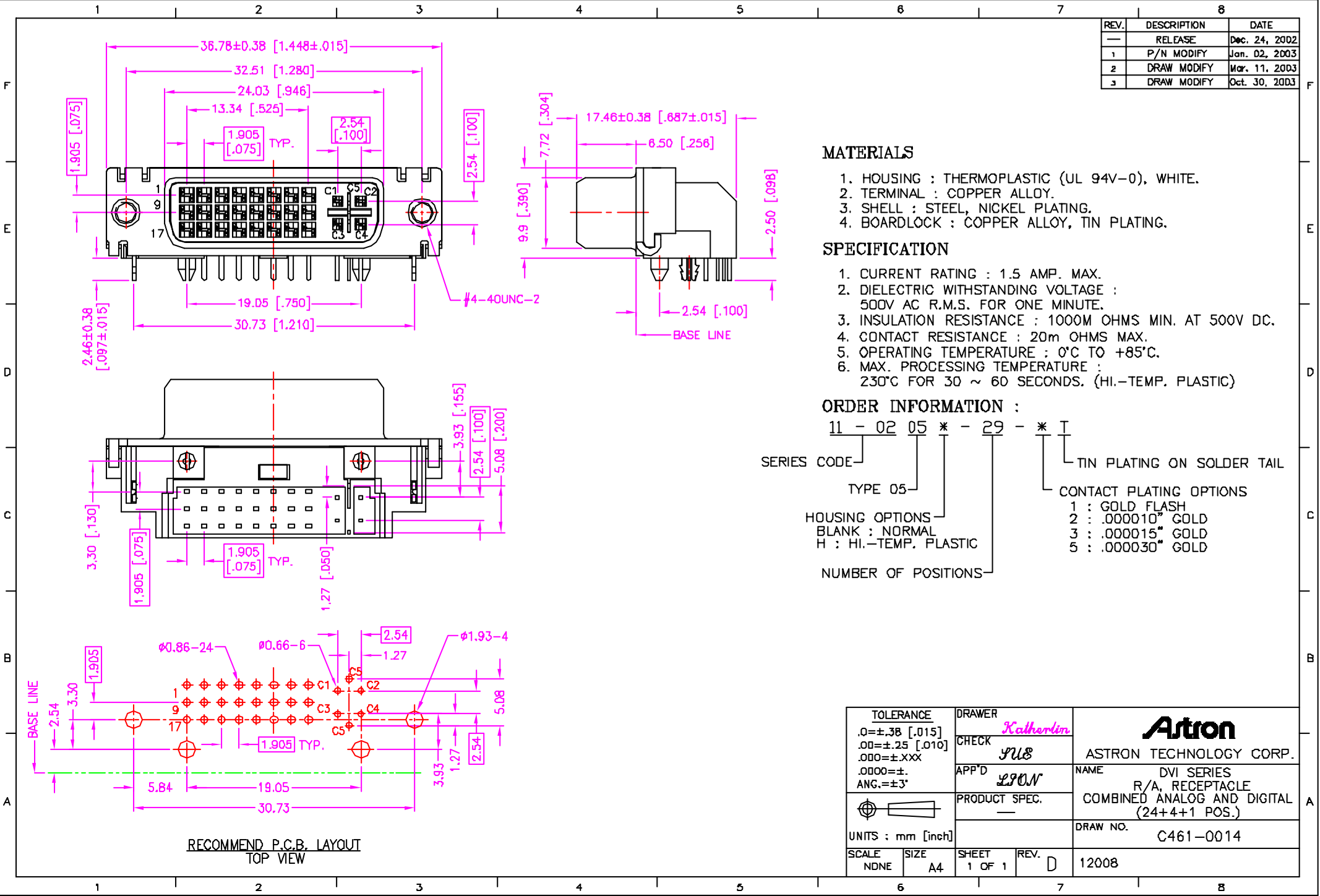
ORDER INFORMATION :

11 - 02 05 * - 29 - * T

SERIES CODE | TYPE 05 | HOUSING OPTIONS | NUMBER OF POSITIONS | TIN PLATING ON SOLDER TAIL | CONTACT PLATING OPTIONS

HOUSING OPTIONS:
 BLANK : NORMAL
 H : HI.-TEMP. PLASTIC

CONTACT PLATING OPTIONS:
 1 : GOLD FLASH
 2 : .000010" GOLD
 3 : .000015" GOLD
 5 : .000030" GOLD



RECOMMEND P.C.B. LAYOUT
TOP VIEW

TOLERANCE .0=±.38 [.015] .00=±.25 [.010] .000=±.xxx .0000=±. ANG.=±3°		DRAWER <i>Katharina</i> CHECK <i>YUS</i> APP'D <i>LON</i>	 ASTRON TECHNOLOGY CORP. NAME DVI SERIES R/A, RECEPTACLE COMBINED ANALOG AND DIGITAL (24+4+1 POS.)	
UNITS : mm [inch] 		PRODUCT SPEC. —		DRAW NO. C461-0014
SCALE NDNE	SIZE A4	SHEET 1 OF 1	REV. D	12008