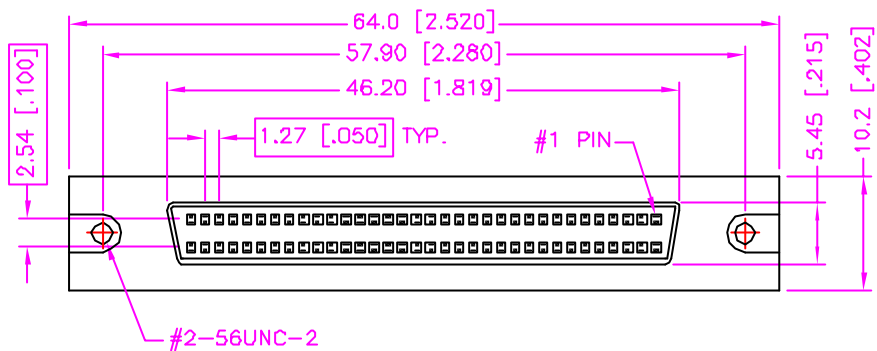


REV.	DESCRIPTION	DATE
—	RELEASE	Apr 25, 2000
1	MATERIAL MODIFY	Jun. 1, 2001
2	DRAW MODIFY	May 27, 2002



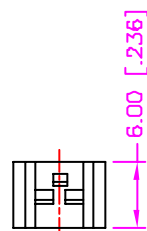
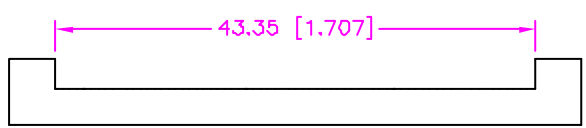
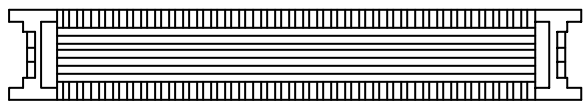
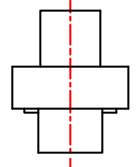
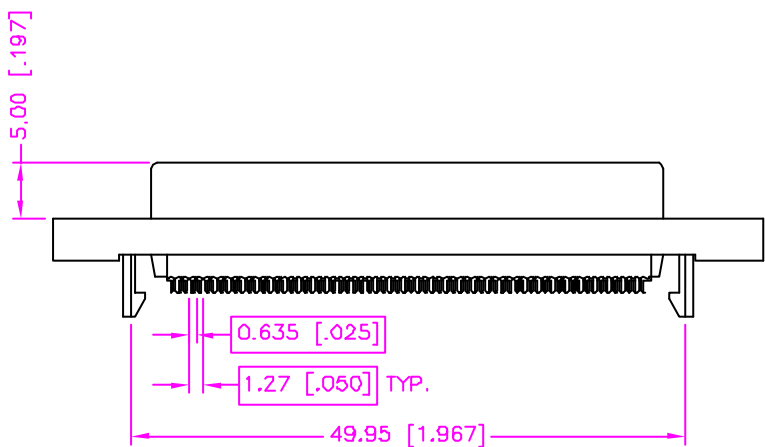
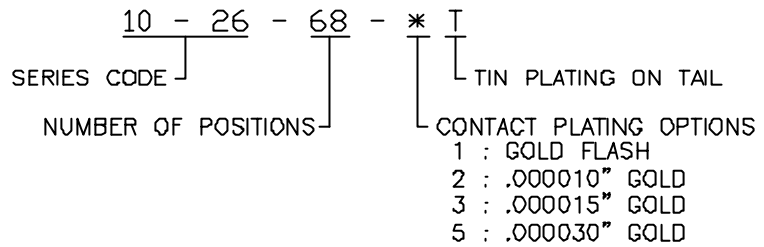
MATERIALS

1. HOUSING : THERMOPLASTIC (UL 94V-0), BLACK.
2. TERMINAL : COPPER ALLOY. (t=0.30mm)
3. SHELL : ZINC ALLOY, NICKEL PLATING.

SPECIFICATION

1. CURRENT RATING : 1 AMP. MAX.
2. DIELECTRIC WITHSTANDING VOLTAGE : 500V AC R.M.S. FOR ONE MINUTE.
3. INSULATION RESISTANCE : 500M OHMS MIN. AT 500V DC.
4. CONTACT RESISTANCE : 30m OHMS MAX.
5. OPERATING TEMPERATURE : -20°C TO +85°C.
6. DURABILITY : 500 CYCLES.

ORDER INFORMATION :



TOLERANCE	DRAWER
.0=±.30 [.012]	<i>Katherlin</i>
.00=±.20 [.008]	CHECK
.000=±.XXX	<i>Sue</i>
.0000=±.	APP'D
ANG.=±3°	<i>Wisaly</i>

PRODUCT SPEC.	—
---------------	---

Astron
ASTRON TECHNOLOGY CORP.

NAME
SCSI SERIES
PIN TYPE, IDC CABLE MOUNT, FEMALE
METAL SHELL WITHOUT LATCH

UNITS : mm [inch]

DRAW NO.
C453-0004

SCALE NONE SIZE A4

SHEET 1 OF 1 REV. C

18003