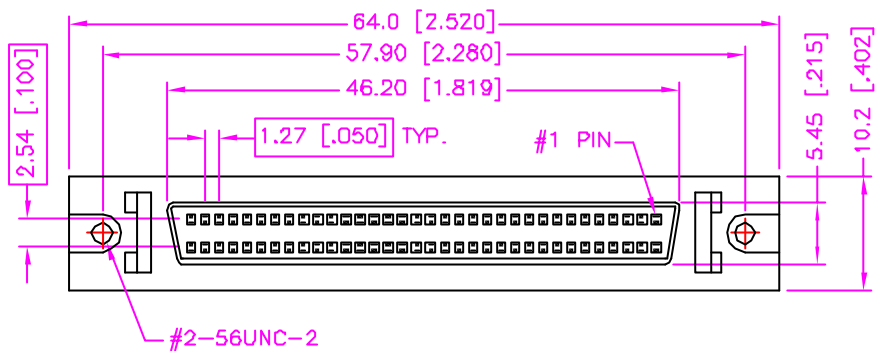


REV.	DESCRIPTION	DATE
—	RELEASE	Apr 25, 2000
1	MATERIAL MODIFY	Jun. 1, 2001
2	DRAW MODIFY	May 27, 2002



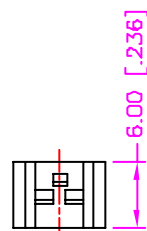
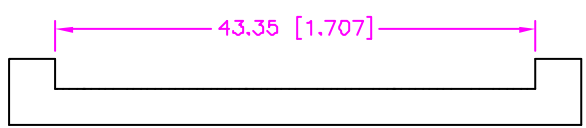
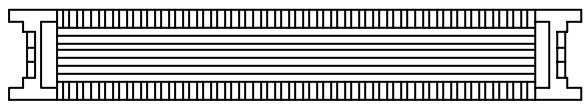
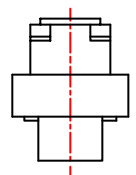
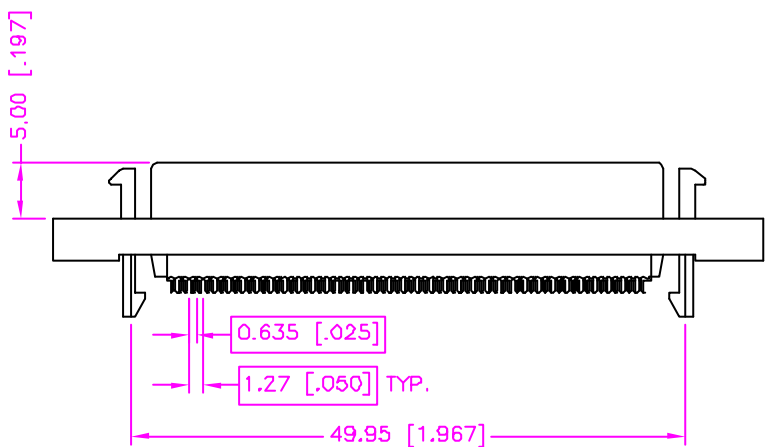
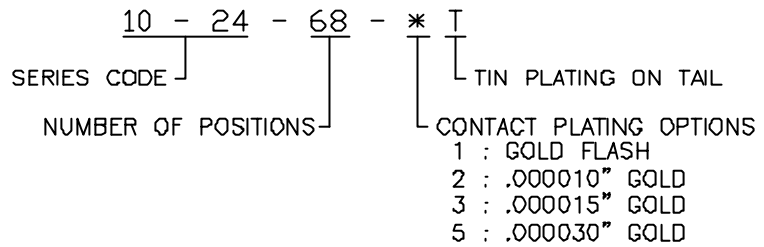
MATERIALS

1. HOUSING : THERMOPLASTIC (UL 94V-0), BLACK.
2. TERMINAL : COPPER ALLOY. (t=0.30mm)
3. SHELL : ZINC ALLOY, NICKEL PLATING.

SPECIFICATION

1. CURRENT RATING : 1 AMP. MAX.
2. DIELECTRIC WITHSTANDING VOLTAGE : 500V AC R.M.S. FOR ONE MINUTE.
3. INSULATION RESISTANCE : 500M OHMS MIN. AT 500V DC.
4. CONTACT RESISTANCE : 30m OHMS MAX.
5. OPERATING TEMPERATURE : -20°C TO +85°C.
6. DURABILITY : 500 CYCLES.

ORDER INFORMATION :



TOLERANCE .0=±.30 [.012] .00=±.20 [.008] .000=±.XXX .0000=±. ANG.=±3°	DRAWER <i>Katherlin</i>	 ASTRON TECHNOLOGY CORP.
	CHECK <i>Sue</i>	
 UNITS : mm [inch]	APP'D <i>Wisaly</i>	PIN TYPE, IDC CABLE MOUNT, FEMALE METAL SHELL WITH LATCH
	PRODUCT SPEC. —	DRAW NO. C453-0003
SCALE NONE	SIZE A4	SHEET 1 OF 1
	REV. C	18003