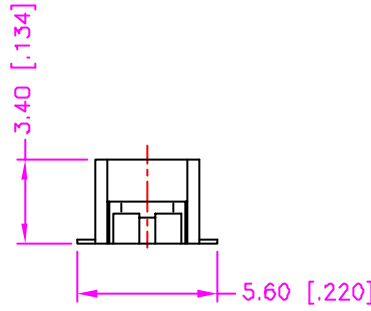
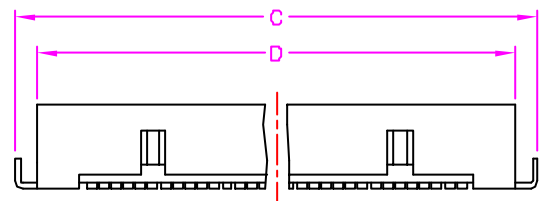
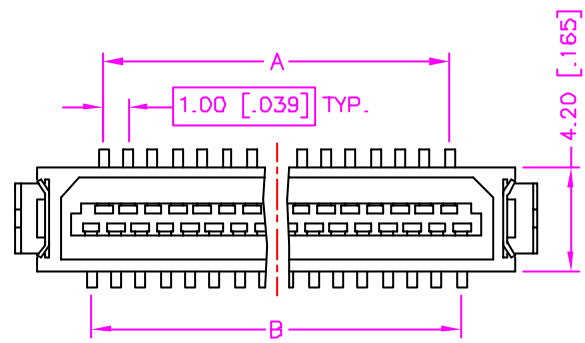


REV.	DESCRIPTION	DATE
A	RELEASE	Mar. 17, 2004
B		
C		



MATERIALS

1. HOUSING : HI.-TEMP. PLASTIC (UL 94V-0), NATURAL.
2. TERMINAL : PHOSPHOR BRONZE, TIN PLATING. (t=0.20mm)
3. SOLDER TAB : BRASS, TIN PLATING. (t=0.20mm)

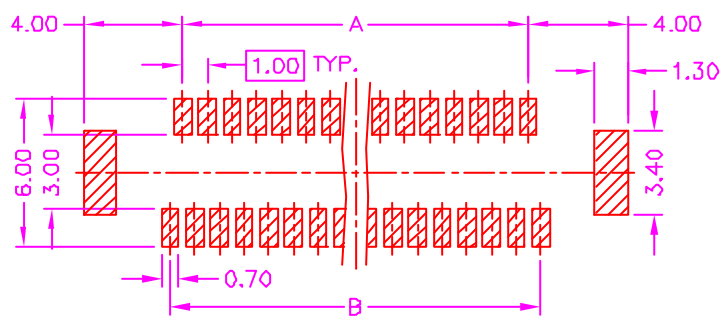
SPECIFICATION

1. CURRENT RATING : 0.5 AMP. MAX.
2. DIELECTRIC WITHSTANDING VOLTAGE : 250V AC R.M.S. FOR ONE MINUTE.
3. INSULATION RESISTANCE : 500M OHMS MIN. AT 25V DC.
4. OPERATING TEMPERATURE : -40°C TO +85°C.
5. MAX. PROCESSING TEMPERATURE : 230°C FOR 30 ~ 60 SECONDS.

ORDER INFORMATION :

35-2101M4 - ** 00

SERIES CODE ————
 NUMBER OF POSITIONS ————



**RECOMMEND P.C.B. LAYOUT
TOP VIEW**

Number Of Position	DIMENSIONS			
	A	B	C	D
31	14.00[.551]	15.00[.591]	21.10[.831]	19.30[.760]
41	19.00[.748]	20.00[.787]	26.10[1.028]	24.30[.957]

TOLERANCE .0=±0.30 [.012] .00=±0.20 [.008] .000=±.xxx .0000=±. ANG.=±3°	DRAWER <i>JUB</i> CHECK <i>Katherlin</i> APP'D <i>LSON</i>	Astron WWW.ASTRON.COM.TW NAME BOARD TO BOARD CONNECTOR 1.00mm PITCH, P.C.B. MOUNT SMT VERTICAL, MALE
 UNITS : mm [inch]	PRODUCT SPEC. —	
SCALE NONE	SIZE A4	SHEET 1 OF 1
	REV. A	DRAW NO. C370-2107
		09006