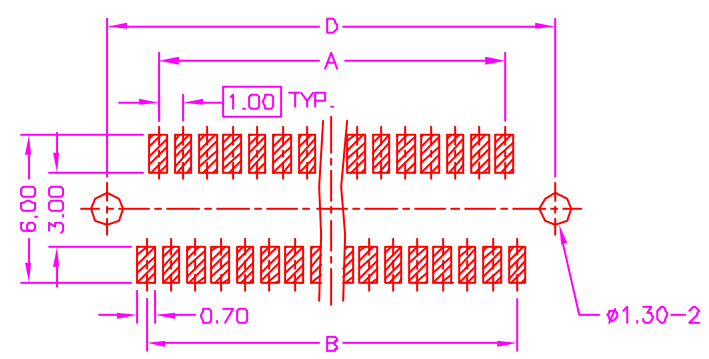
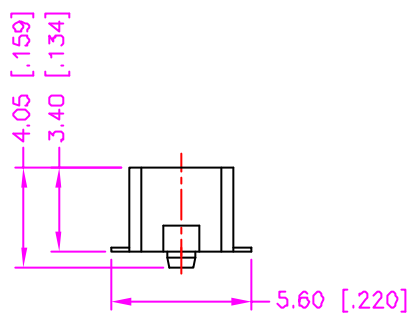
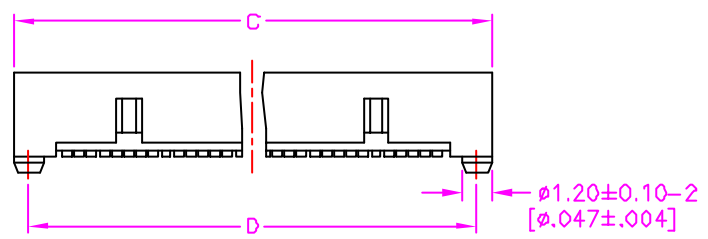
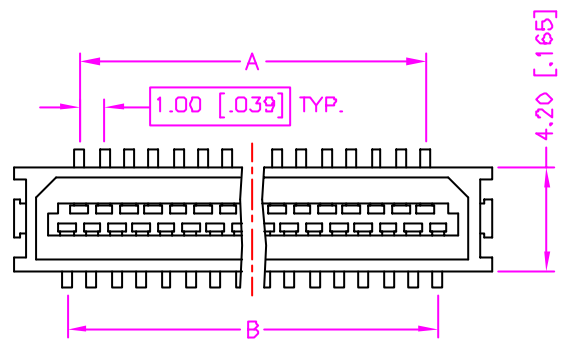


REV.	DESCRIPTION	DATE
—	RELEASE	Feb. 10, 2003
1	DRAW MODIFY	Feb. 27, 2003
2		



RECOMMEND P.C.B. LAYOUT
TOP VIEW

MATERIALS

- HOUSING : HI.-TEMP. PLASTIC (UL 94V-0), NATURAL.
- TERMINAL : PHOSPHOR BRONZE, TIN PLATING.
(t=0.20mm)

SPECIFICATION

- CURRENT RATING : 0.5 AMP. MAX.
- DIELECTRIC WITHSTANDING VOLTAGE :
250V AC R.M.S. FOR ONE MINUTE.
- INSULATION RESISTANCE : 500M OHMS MIN.
AT 250V DC.
- OPERATING TEMPERATURE : -40°C TO +85°C.
- MAX. PROCESSING TEMPERATURE :
230°C FOR 30 ~ 60 SECONDS.


ORDER INFORMATION :

35-2101M2 - ** 00

SERIES CODE

NUMBER OF POSITIONS

Number Of Position	DIMENSIONS			
	A	B	C	D
31	14.00[.551]	15.00[.591]	19.30[.760]	18.10[.713]
41	19.00[.748]	20.00[.787]	24.30[.957]	23.10[.909]

TOLERANCE .0=±0.30 [.012] .00=±0.20 [.008] .000=±.xxx .0000=±. ANG.=±3°	DRAWER <i>LION</i>	ASTRON TECHNOLOGY CORP.
	CHECK <i>Katherine</i>	
 UNITS : mm [inch]	APP'D <i>PUS</i>	DRAW NO. C370-2105
	PRODUCT SPEC. —	REV. B
SCALE NONE	SIZE A4	T0001
	SHEET 1 OF 1	