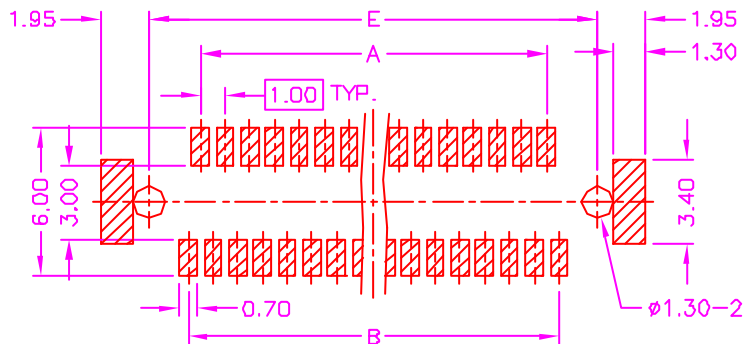
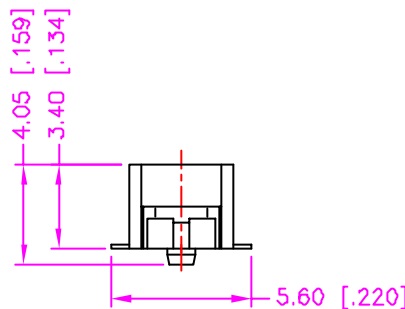
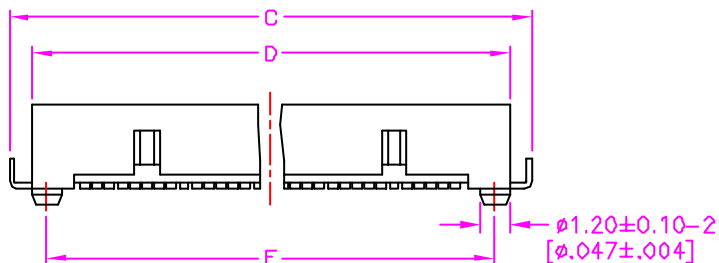
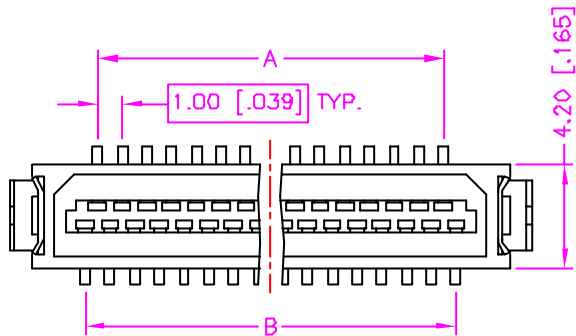


REV.	DESCRIPTION	DATE
—	RELEASE	Feb. 10, 2003
1	DRAW MODIFY	Feb. 27, 2003
2		



RECOMMEND P.C.B. LAYOUT  
TOP VIEW

### MATERIALS

1. HOUSING : HI.-TEMP. PLASTIC (UL 94V-0), NATURAL.
2. TERMINAL : PHOSPHOR BRONZE, TIN PLATING.  
(t=0.20mm)
3. SOLDER TAB : BRASS, TIN PLATING. (t=0.20mm)

### SPECIFICATION

1. CURRENT RATING : 0.5 AMP. MAX.
2. DIELECTRIC WITHSTANDING VOLTAGE :  
250V AC R.M.S. FOR ONE MINUTE.
3. INSULATION RESISTANCE : 500M OHMS MIN.  
AT 250V DC.
4. OPERATING TEMPERATURE : -40°C TO +85°C.
5. MAX. PROCESSING TEMPERATURE :  
230°C FOR 30 ~ 60 SECONDS.



### ORDER INFORMATION :

35-2101M1 - \*\* 00

SERIES CODE

NUMBER OF POSITIONS

Number Of Position	DIMENSIONS				
	A	B	C	D	E
31	14.00[.551]	15.00[.591]	21.10[.831]	19.30[.760]	18.10[.713]
41	19.00[.748]	20.00[.787]	26.10[1.028]	24.30[.957]	23.10[.909]

TOLERANCE .0=±0.30 [.012] .00=±0.20 [.008] .000=±.xxx .0000=±. ANG.=±3°	DRAWER <i>LION</i> CHECK <i>Katherine</i> APP'D <i>PUB</i>	 <b>ASTRON TECHNOLOGY CORP.</b> NAME BOARD TO BOARD CONNECTOR 1.00mm PITCH, P.C.B. MOUNT SMT VERTICAL, MALE		
 UNITS : mm [inch]	PRODUCT SPEC. —		DRAW NO. C370-2104	
SCALE NONE	SIZE A4	SHEET 1 OF 1	REV. B	T0001