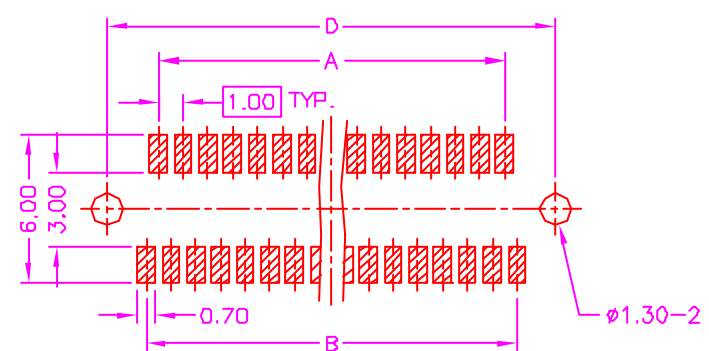
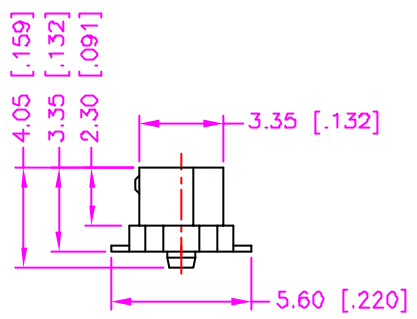
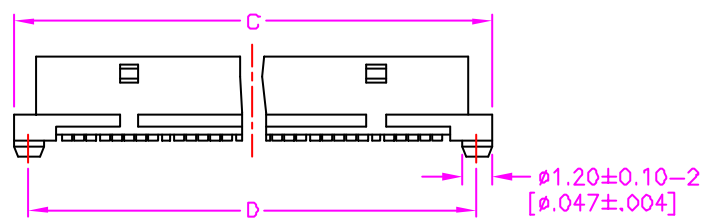
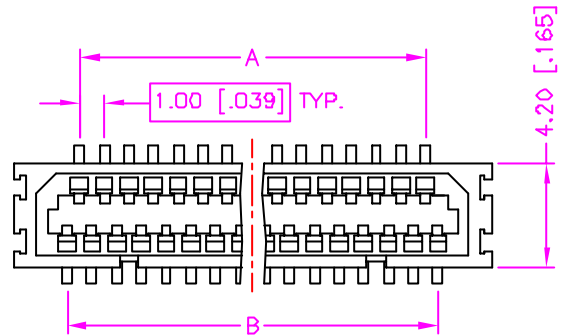


REV.	DESCRIPTION	DATE
—	RELEASE	Oct. 23, 2002
1	DRAW MODIFY	Feb. 10, 2003
2	DRAW MODIFY	Feb. 24, 2003



**RECOMMEND P.C.B. LAYOUT
TOP VIEW**

MATERIALS

- HOUSING : HI.-TEMP. PLASTIC (UL 94V-0), NATURAL.
- TERMINAL : PHOSPHOR BRONZE, TIN PLATING.
(t=0.20mm)

SPECIFICATION


- CURRENT RATING : 0.5 AMP. MAX.
- DIELECTRIC WITHSTANDING VOLTAGE :
250V AC R.M.S. FOR ONE MINUTE.
- INSULATION RESISTANCE : 500M OHMS MIN.
AT 250V DC.
- CONTACT RESISTANCE : 50m OHMS MAX.
- OPERATING TEMPERATURE : -40°C TO +85°C.
- MAX. PROCESSING TEMPERATURE :
230°C FOR 30 ~ 60 SECONDS.

ORDER INFORMATION :

35-2101F2 - ** 00

SERIES CODE
NUMBER OF POSITIONS

Number Of Position	DIMENSIONS			
	A	B	C	D
31	14.00[.551]	15.00[.591]	19.30[.760]	18.10[.713]
41	19.00[.748]	20.00[.787]	24.30[.957]	23.10[.909]

TOLERANCE .0=±0.30 [.012] .00=±0.20 [.008] .000=±.xxx .0000=±. ANG.=±3°	DRAWER <i>LION</i> CHECK <i>PLS</i> APP'D <i>Katherlin</i>	Astron ASTRON TECHNOLOGY CORP. NAME BOARD TO BOARD CONNECTOR 1.00mm PITCH, P.C.B. MOUNT SMT VERTICAL, FEMALE (STACKING HEIGHT=4.30mm)		
 UNITS : mm [inch]	PRODUCT SPEC. —		DRAW NO. C370-2102	
SCALE NONE	SIZE A4	SHEET 1 OF 1	REV. C	TOOD1