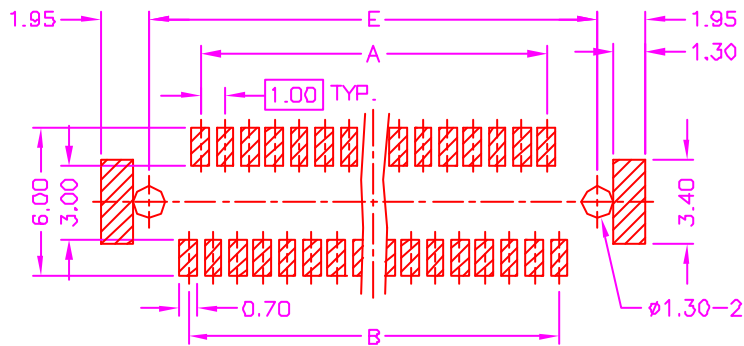
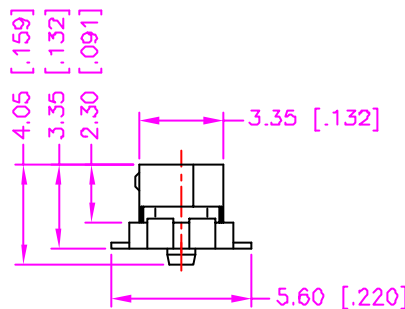
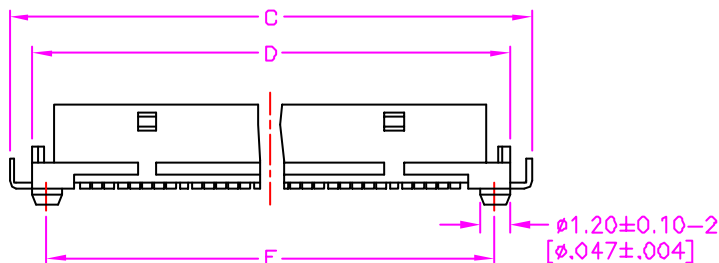
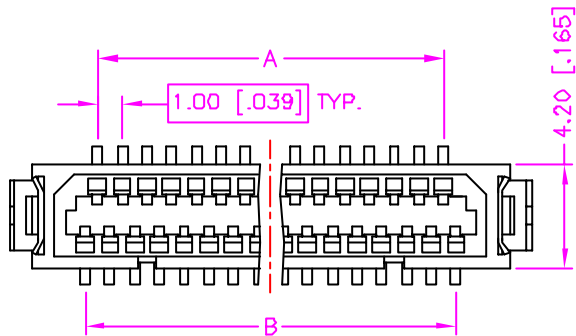


REV.	DESCRIPTION	DATE
—	RELEASE	Oct. 23, 2002
1	DRAW MODIFY	Feb. 10, 2003
2	DRAW MODIFY	Feb. 24, 2003



RECOMMEND P.C.B. LAYOUT  
TOP VIEW

**MATERIALS**

1. HOUSING : HI.-TEMP. PLASTIC (UL 94V-0), NATURAL
2. TERMINAL : PHOSPHOR BRONZE, TIN PLATING.  
(t=0.20mm)
3. SOLDER TAB : BRASS, TIN PLATING. (t=0.20mm)

**SPECIFICATION**

1. CURRENT RATING : 0.5 AMP. MAX.
2. DIELECTRIC WITHSTANDING VOLTAGE :  
250V AC R.M.S. FOR ONE MINUTE.
3. INSULATION RESISTANCE : 500M OHMS MIN.  
AT 250V DC.
4. CONTACT RESISTANCE : 50m OHMS MAX.
5. OPERATING TEMPERATURE : -40°C TO +85°C.
6. MAX. PROCESSING TEMPERATURE :  
230°C FOR 30 ~ 60 SECONDS.

**ORDER INFORMATION :**

35-2101F1 - \*\* 00

SERIES CODE

NUMBER OF POSITIONS

<b>TOLERANCE</b> .0=±0.30 [.012] .00=±0.20 [.008] .000=±.xxx .0000=±. ANG.=±3°	<b>DRAWER</b> <i>LION</i>	 <b>ASTRON TECHNOLOGY CORP.</b>
	<b>CHECK</b> <i>PLS</i>	
 UNITS : mm [inch]	<b>APP'D</b> <i>Katherine</i>	<b>DRAW NO.</b> C370-2101
	<b>PRODUCT SPEC.</b> —	<b>REV.</b> C
<b>SCALE</b> NONE	<b>SIZE</b> A4	<b>SHEET</b> 1 OF 1
		<b>REV.</b> C
		<b>T0001</b>

Number Of Position	DIMENSIONS				
	A	B	C	D	E
31	14.00[.551]	15.00[.591]	21.10[.831]	19.30[.760]	18.10[.713]
41	19.00[.748]	20.00[.787]	26.10[1.028]	24.30[.957]	23.10[.909]