

REV.	DESCRIPTION	DATE
—	RELEASE	Jun. 24, 2002
1	LAYOUT MODIFY	Jul. 02, 2002
2	DRAW MODIFY	Aug. 06, 2002
3	DRAW MODIFY	Sep. 30, 2002
4	P/N MODIFY	Dec. 18, 2002
6	DRAW MODIFY	Oct. 13, 2003

$$A = (\text{TOTAL NO. OF PINS} - 1) \times 0.50 + 5.10$$

$$(\text{TOTAL NO. OF PINS} - 1) \times 0.020 + 0.201$$

$$B = (\text{TOTAL NO. OF PINS} - 1) \times 0.50$$

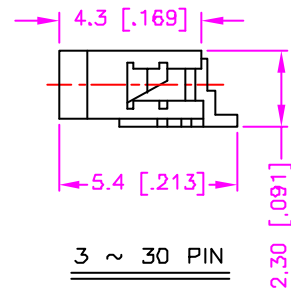
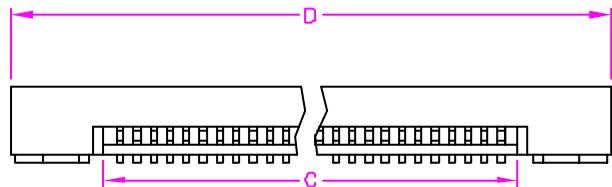
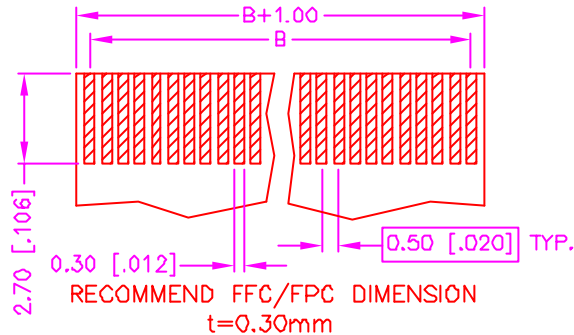
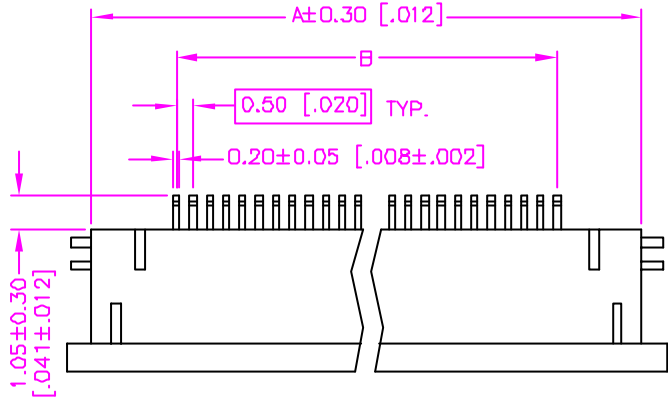
$$(\text{TOTAL NO. OF PINS} - 1) \times 0.020$$

$$C = (\text{TOTAL NO. OF PINS} - 1) \times 0.50 + 1.10$$

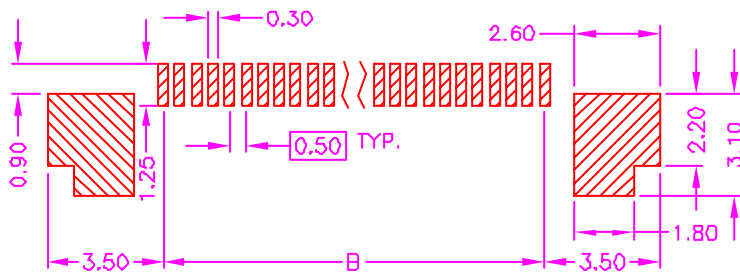
$$(\text{TOTAL NO. OF PINS} - 1) \times 0.020 + 0.043$$

$$D = (\text{TOTAL NO. OF PINS} - 1) \times 0.50 + 7.10$$

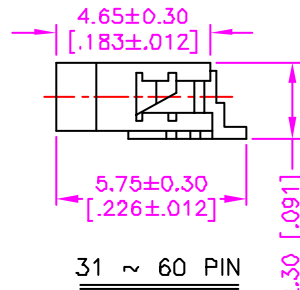
$$(\text{TOTAL NO. OF PINS} - 1) \times 0.020 + 0.280$$



3 ~ 30 PIN



RECOMMEND P.C.B. LAYOUT
TOP VIEW



31 ~ 60 PIN

MATERIALS

- HOUSING : HI.-TEMP. PLASTIC (UL 94V-0).
- SLIDER : POLYAMIDE (UL 94V-0), BROWN.
- TERMINAL : PHOSPHOR BRONZE. (t=0.20mm)
- MATEL TAB : COPPER ALLOY, TIN PLATING. (t=0.20mm)

SPECIFICATION

- CURRENT RATING : 0.5 AMP. MAX.
- DIELECTRIC WITHSTANDING VOLTAGE : 250V AC R.M.S. FOR ONE MINUTE.
- INSULATION RESISTANCE : 50M OHMS MIN. AT 250V DC.
- CONTACT RESISTANCE : 30m OHMS MAX.
- OPERATING TEMPERATURE : -40°C TO +85°C.
- MAX. PROCESSING TEMP. : 230°C FOR 30 ~ 60 SECONDS.

ORDER INFORMATION :

55 - 4602 2 - ** W - T - **

SERIES CODE



BOTTOM CONTACT

NUMBER OF POSITIONS
03 ~ 60 PINS

WITHE IN HOUSING COLOR

TIN PLATING ON TERMINAL

PACKAGE OPTIONS
BLANK : TUBE
TR : TAPE & REEL

TOLERANCE .0=±0.30 [0.012] .00=±0.25 [0.010] .000=±.xxx .0000=±. ANG.=±3°	DRAWER <i>Katherine</i> CHECK <i>SUE</i> APP'D <i>LION</i>	 ASTRON TECHNOLOGY CORP. NAME FPC CONNECTOR 0.50mm PITCH, BOTTOM CONTACT SMT, ZIF	
 UNITS : mm [inch]	PRODUCT SPEC. —		DRAW NO. C355-4604
SCALE NONE	SIZE A4	SHEET 1 OF 1	REV. F
			12019