

REV.	DESCRIPTION	DATE
—	RELEASE	SEP. 4, 2001
1		
2		

$$A = (\text{TOTAL NO. OF PINS}) \times 1.00 + 2.50 \pm 0.30$$

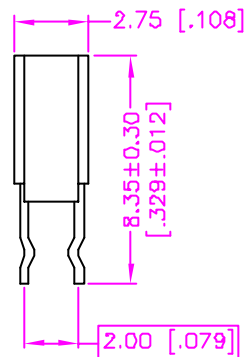
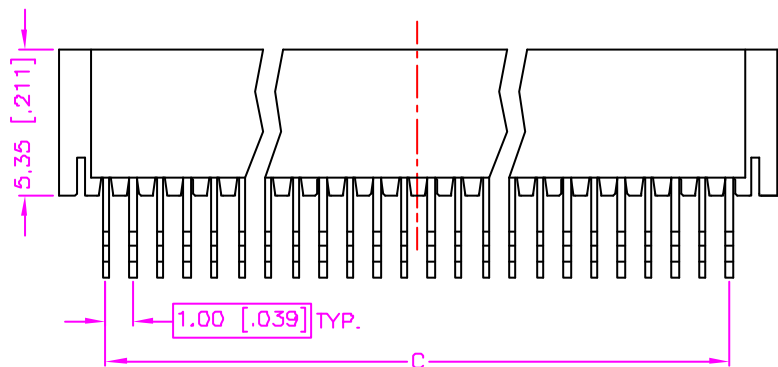
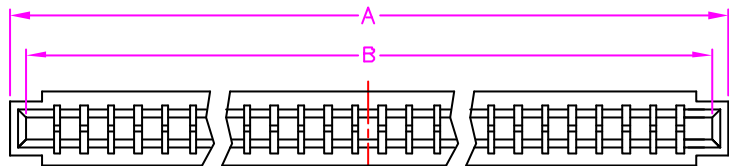
$$(\text{TOTAL NO. OF PINS}) \times 0.039 + 0.098 \pm 0.012$$

$$B = (\text{TOTAL NO. OF PINS}) \times 1.00 + 1.15$$

$$(\text{TOTAL NO. OF PINS}) \times 0.039 + 0.045$$

$$C = (\text{TOTAL NO. OF PINS} - 1) \times 1.00$$

$$(\text{TOTAL NO. OF PINS} - 1) \times 0.039$$



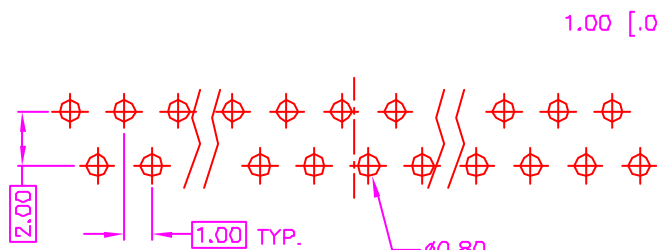
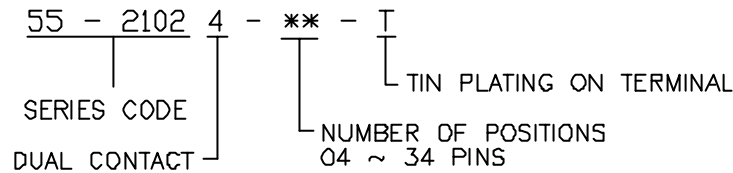
MATERIALS

1. HOUSING : P.B.T. (UL 94V-0), BLACK.
2. TERMINAL : COPPER ALLOY. (t=0.25mm)

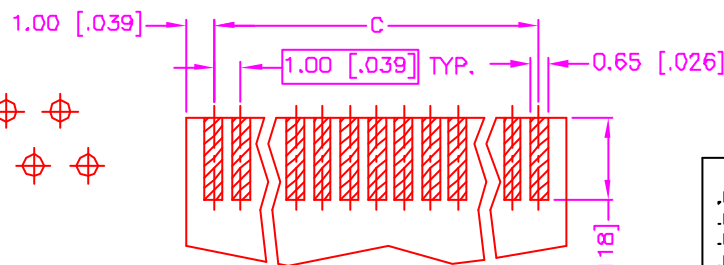
SPECIFICATION

1. CURRENT RATING : 0.5 AMP. MAX.
2. DIELECTRIC WITHSTANDING VOLTAGE : 500V AC R.M.S. FOR ONE MINUTE.
3. INSULATION RESISTANCE : 500M OHMS MIN. AT 500V DC.
4. CONTACT RESISTANCE : 30m OHMS MAX.
5. OPERATING TEMPERATURE : -40°C TO +85°C.

ORDER INFORMATION :



RECOMMEND P.C.B. LAYOUT
BOTTOM VIEW



RECOMMEND FFC/FPC DIMENSION
t=0.25~0.35mm

TOLERANCE .0=±0.30 [.012] .00=±0.20 [.008] .000=±.XXX .0000=±. ANG.=±3°	DRAWER <i>ms</i> CHECK <i>Katherlin</i> APP'D <i>ASLT</i>	Astron ASTRON TECHNOLOGY CORP. NAME FPC CONNECTOR 1.00mm PITCH, P.C.B. MOUNT VERTICAL, NON-ZIF, KINK PIN DRAW NO. C355-2101
 UNITS : mm [inch]	PRODUCT SPEC. —	
SCALE NONE	SIZE A4	SHEET 1 OF 1
	REV. A	10015