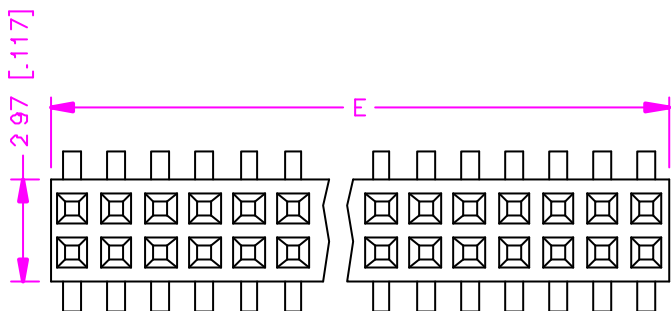


REV.	DESCRIPTION	DATE
—	RELEASE	Jul 18, 2001
1		
2		



$$E = (\text{NO. OF POSITION PER ROW}) \times 1.27 + 0.38 \pm 0.30$$

$$F = (\text{NO. OF POSITION PER ROW} - 1) \times 1.27$$

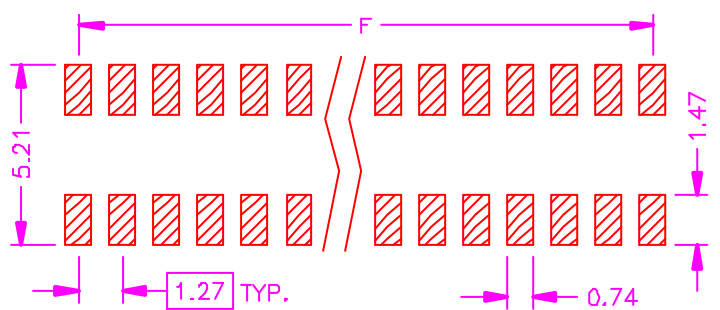
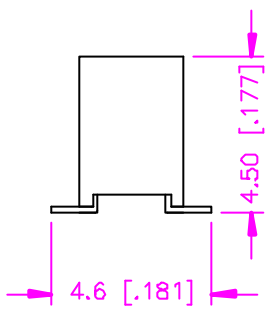
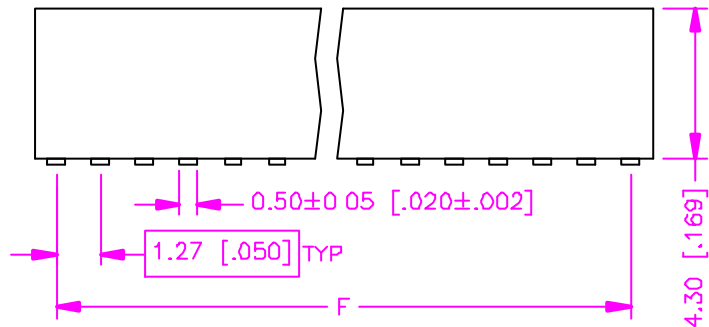
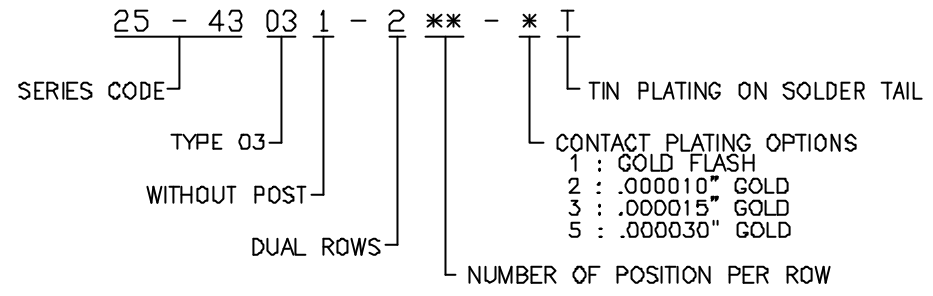
**MATERIALS**

- HOUSING : HI.-TEMP. PLASTIC (UL 94V-0), BLACK.
- TERMINAL : COPPER ALLOY. (t=0.15mm)

**SPECIFICATION**

- CURRENT RATING : 1 AMP. MAX.
- DIELECTRIC WITHSTANDING VOLTAGE : 600V AC R.M.S. FOR ONE MINUTE.
- INSULATION RESISTANCE : 5000M OHMS MIN. AT 500V DC.
- CONTACT RESISTANCE . 30m OHMS MAX.
- OPERATING TEMPERATURE : -55°C TO +105°C.
- MAX. PROCESSING TEMPERATURE : 230°C FOR 30 ~ 60 SECONDS.

**ORDER INFORMATION :**



RECOMMEND P.C.B. LAYOUT  
TOP VIEW

TOLERANCE .0=±.30 [.012] .00=±.20 [.008] .000=± XXX .0000=±. ANG.=±3°	DRAWER <i>fuB</i>	<b>Astron</b> ASTRON TECHNOLOGY CORP.
	CHECK <i>Kalherlin</i>	
UNITS : mm [inch]	APP'D <i>ALBT</i>	DRAW NO C343-3002
	PRODUCT SPEC. —	SCALE NONE   SIZE A4   SHEET 1 OF 1   REV. <i>A</i>   05001