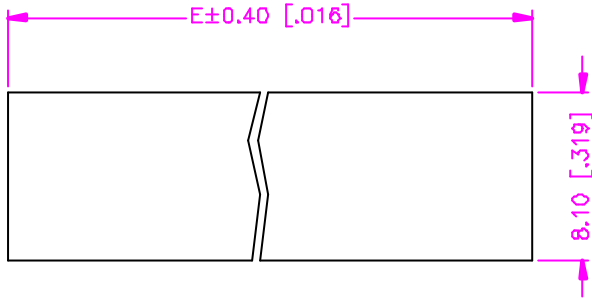


REV.	DESCRIPTION	DATE
—	RELEASE	Jun. 25, 2002
1		
2		



$$E = (\text{NO. OF POSITION PER ROW}) \times 2.54$$

$$(\text{NO. OF POSITION PER ROW}) \times 1.00$$

$$F = (\text{NO. OF POSITION PER ROW} - 1) \times 2.54$$

$$(\text{NO. OF POSITION PER ROW} - 1) \times 1.00$$

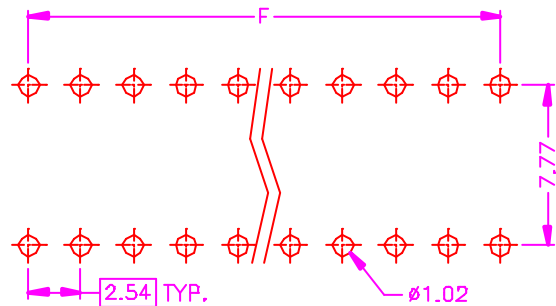
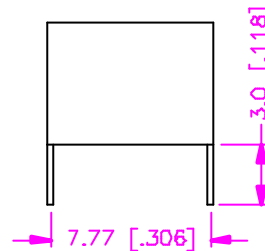
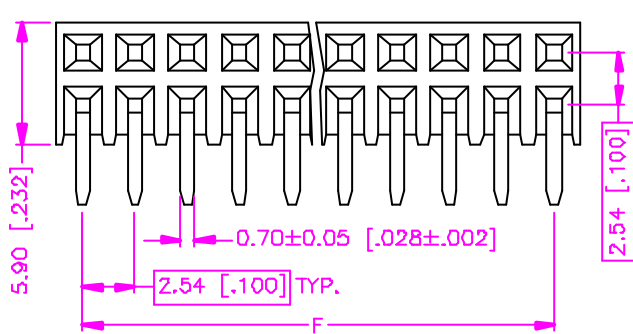
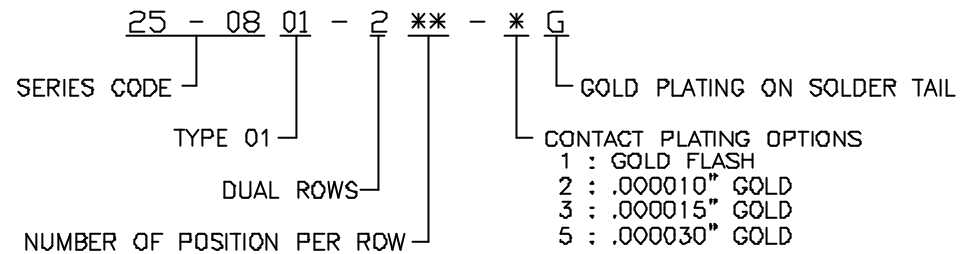
MATERIALS

1. HOUSING : POLYESTER (UL 94V-0), BLACK.
2. TERMINAL : COPPER ALLOY. (t=0.25mm)

SPECIFICATION

1. CURRENT RATING : 3 AMP. MAX.
2. DIELECTRIC WITHSTANDING VOLTAGE : 1000V AC R.M.S. FOR ONE MINUTE.
3. INSULATION RESISTANCE : 5000M OHMS MIN. AT 1000V DC.
4. CONTACT RESISTANCE : 30m DHMS MAX.
5. OPERATING TEMPERATURE : -55°C TO +105°C.

ORDER INFORMATION :



RECOMMEND P.C.B. LAYOUT
BOTTOM VIEW

TOLERANCE .0=±.30 [.012] .00=±.20 [.008] .000=±.XXX .0000=±. ANG.=±3°		DRAWER <i>FUE</i>	Astron ASTRON TECHNOLOGY CORP.
CHECK <i>Kathleen</i>		APP'D <i>ASX</i>	
UNITS : mm [inch]		PRODUCT SPEC. —	NAME POST HEADER RECEPTACLE 2.54mm PITCH P.C.B. MOUNT SIDE ENTRY TYPE
SCALE NONE	SIZE A4	SHEET 1 OF 1	REV. A
		DRAW NO. C341-8001	
		13001	