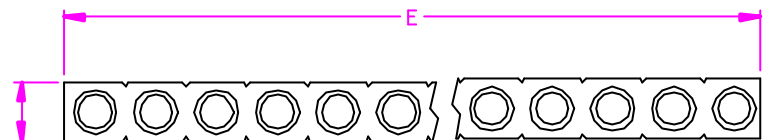


REV.	DESCRIPTION	DATE
—	RELEASE	May 08, 2002
1		
2		



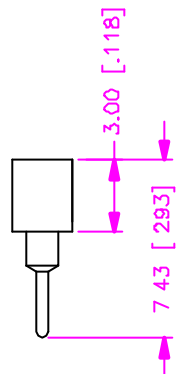
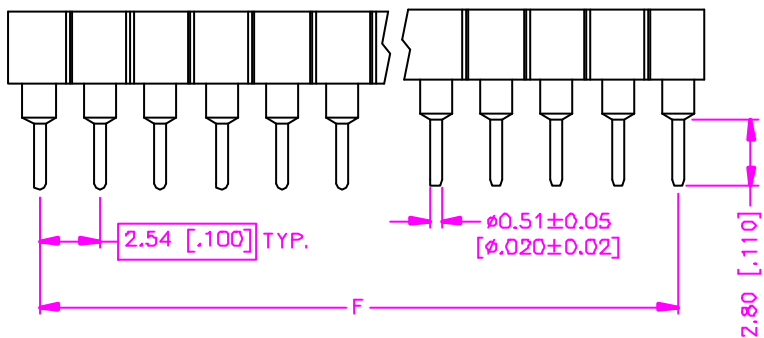
$$E = (\text{TOTAL NO. OF PINS}) \times 2.54 \pm 0.30$$

$$(\text{TOTAL NO. OF PINS}) \times .100 \pm .012$$

$$F = (\text{TOTAL NO. OF PINS} - 1) \times 2.54$$

$$(\text{TOTAL NO. OF PINS} - 1) \times .100$$

2.54 [.100]



MATERIALS

1. HOUSING : POLYESTER (UL 94V-0), BLACK.
2. CONTACT : BERYLLIUM COPPER, GOLD PLATING.
3. TERMINAL . BRASS, TIN PLATING.

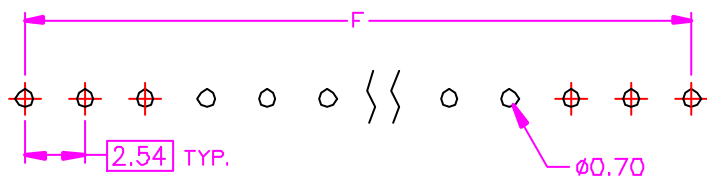
SPECIFICATION

1. CURRENT RATING . 1 AMP. MAX.
2. DIELECTRIC WITHSTANDING VOLTAGE :
1000V AC R.M.S. FOR ONE MINUTE.
3. INSULATION RESISTANCE : 5000M OHMS MIN.
AT 1000V DC.
4. CONTACT RESISTANCE : 30m OHMS MAX.
5. OPERATING TEMPERATURE : -55°C TO +105°C.

ORDER INFORMATION :

25 - 03 01 - 1 **

SERIES CODE | TYPE 01 | TOTAL NO. OF PINS | SINGLE ROW



RECOMMEND P.C.B. LAYOUT
BOTTOM VIEW

TOLERANCE .0 = ±0.30 [.012] .00 = ±0.20 [.008] .000 = ±.XXX .0000 = ± ANG. = ±3°	DRAWER <i>JUS</i> CHECK <i>Katherlin</i> APP'D <i>ALBT</i>	 ASTRON TECHNOLOGY CORP. NAME POST HEADER RECEPTACLE 2.54mm PITCH, P.C.B. MOUNT VERTICAL, MACHINE PIN TYPE
 UNITS : mm [inch]	PRODUCT SPEC 307-0001	
SCALE NONE SIZE A4	SHEET 1 OF 1 REV. A	DRAW NO. C341-3001 20001