

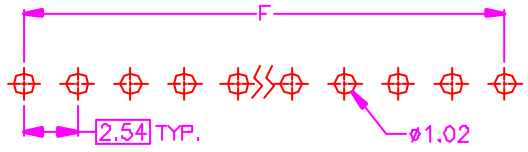
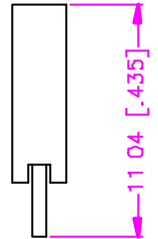
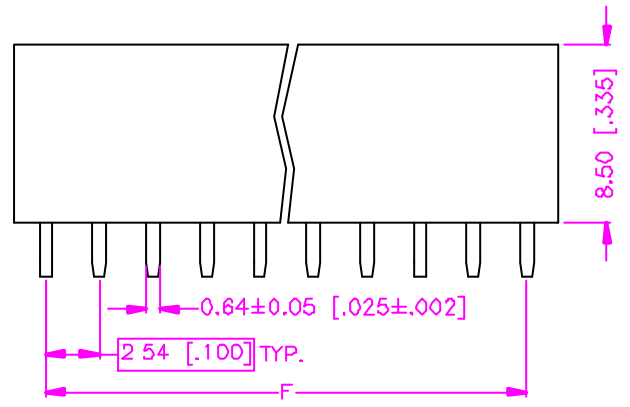
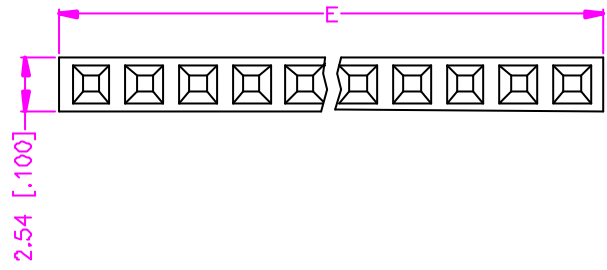
REV.	DESCRIPTION	DATE
—	RELEASE	Dec 27, 2001
1		
2		

$$E = (\text{NO. OF POSITION PER ROW}) \times 2.54 + 0.50 \pm 0.40$$

$$(\text{NO. OF POSITION PER ROW}) \times 1.00 + 0.020 \pm 0.016$$

$$F = (\text{NO. OF POSITION PER ROW} - 1) \times 2.54$$

$$(\text{NO. OF POSITION PER ROW} - 1) \times 1.00$$



RECOMMEND P.C.B. LAYOUT
BOTTOM VIEW

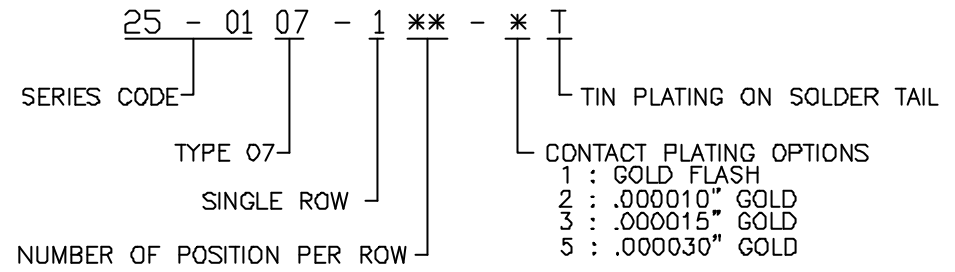
MATERIALS

1. HOUSING : P.B.T. (UL 94V-0), BLACK.
2. TERMINAL : COPPER ALLOY. (t=0.64mm)

SPECIFICATION

1. CURRENT RATING : 3 AMP. MAX.
2. DIELECTRIC WITHSTANDING VOLTAGE : 1000V AC R.M.S. FOR ONE MINUTE.
3. INSULATION RESISTANCE : 5000M OHMS MIN. AT 1000V DC.
4. CONTACT RESISTANCE : 30m OHMS MAX.
5. OPERATING TEMPERATURE : -55°C TO +105°C.

ORDER INFORMATION :



TOLERANCE .0 = ±.30 [.012] .00 = ±.20 [.008] .000 = ±.XXX .0000 = ±. ANG. = ±3°	DRAWER <i>FLB</i>	 ASTRON TECHNOLOGY CORP.	
	CHECK <i>Katharina</i>		NAME POST HEADER RECEPTACLE
 UNITS : mm [inch]	APP'D <i>ALB</i>	2.54mm PITCH, P.C.B. MOUNT VERTICAL	
	SCALE NONE	PRODUCT SPEC. —	DRAW NO. C341-1011
SIZE A4	SHEET 1 OF 1	REV. A	1001B