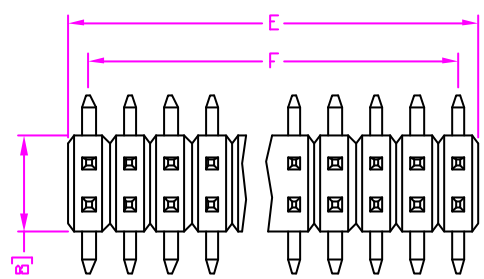


REV.	DESCRIPTION	DATE
—	RELEASE	JUL 19, 2001
1		
2		



$$E = (\text{NO. OF POSITION PER ROW}) \times 1.27 \pm 0.30$$

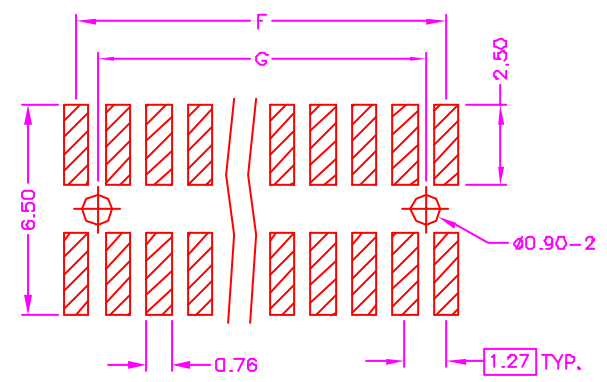
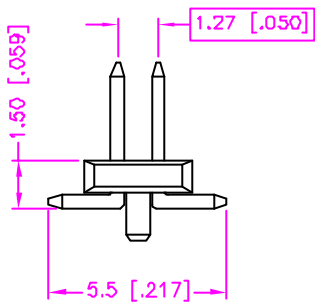
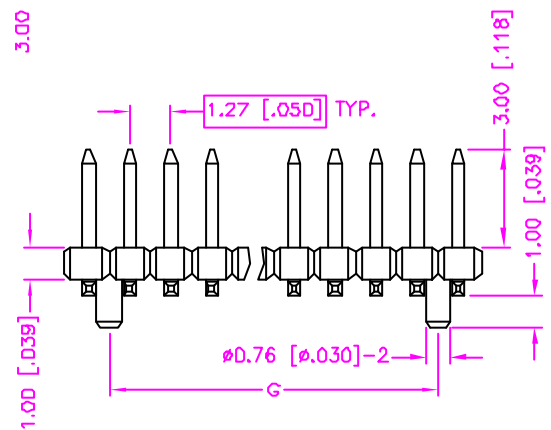
$$F = (\text{NO. OF POSITION PER ROW}) \times 0.50 \pm 0.12$$

$$F = (\text{NO. OF POSITION PER ROW} - 1) \times 1.27$$

$$G = (\text{NO. OF POSITION PER ROW} - 1) \times 0.50$$

$$G = (\text{NO. OF POSITION PER ROW} - 2) \times 1.27$$

$$G = (\text{NO. OF POSITION PER ROW} - 2) \times 0.50$$



RECOMMEND P.C.B. LAYOUT
BOTTOM VIEW

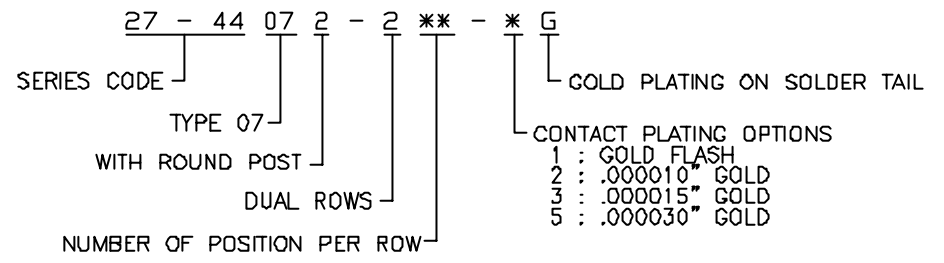
MATERIALS

- HOUSING : HI.-TEMP. PLASTIC (UL 94V-0), BLACK.
- TERMINAL : S.Q. 0.40mm COPPER ALLOY.

SPECIFICATION

- CURRENT RATING : 1 AMP. MAX.
- DIELECTRIC WITHSTANDING VOLTAGE : 600V AC R.M.S. FOR ONE MINUTE.
- INSULATION RESISTANCE : 5000M OHMS MIN. AT 500V DC.
- OPERATING TEMPERATURE : -55°C TO +105°C.
- MAX. PROCESSING TEMPERATURE : 230°C FOR 30 ~ 60 SECONDS.

ORDER INFORMATION :



TOLERANCE .0=±.0.30 [.012] .00=±0.20 [.008] .000=±.xxx .0000=±. ANG.=±3°	DRAWER <i>PUB</i> CHECK <i>Katherlin</i> APP'D <i>WJ&LV</i>	 ASTRON TECHNOLOGY CORP. NAME POST HEADER 1.27x1.27mm PITCH, P.C.B. MOUNT SMT TYPE DRAW NO. C333-4005
 UNITS : mm [inch]	PRODUCT SPEC. —	
SCALE NONE	SIZE A4	SHEET 1 OF 1
	REV. A	05005