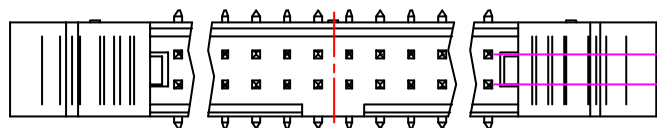
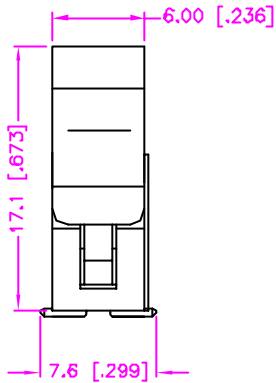
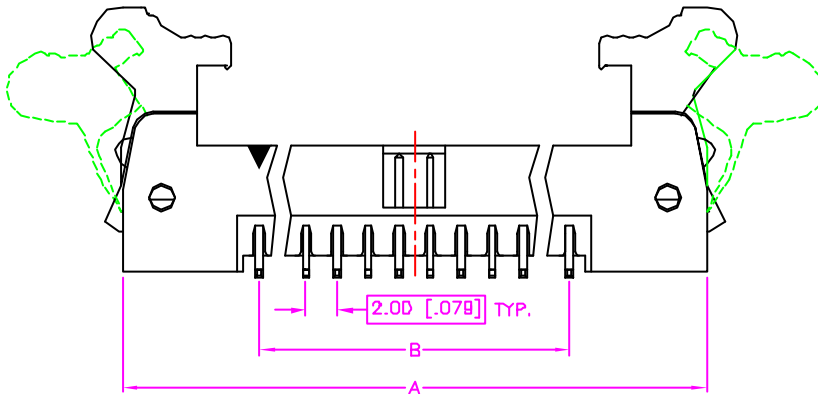


| REV. | DESCRIPTION | DATE          |
|------|-------------|---------------|
| —    | RELEASE     | Jan. 08, 2002 |
| 1    |             |               |
| 2    |             |               |



2.00 [.079]



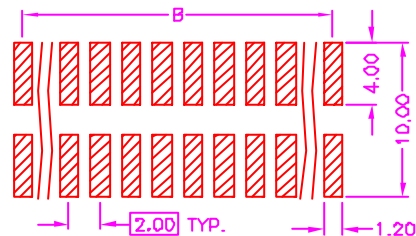
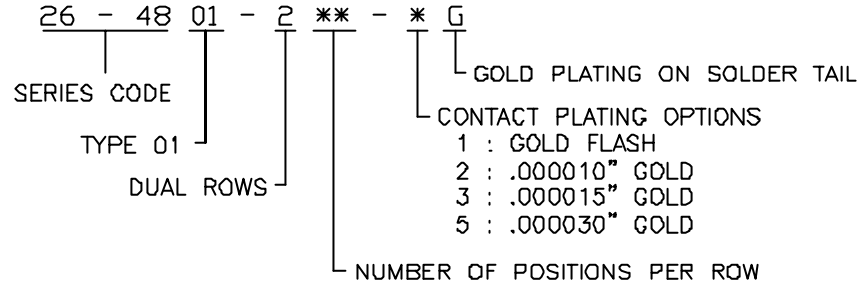
**MATERIALS**

- 1. HOUSING : HI.-TEMP. PLASTIC (UL 94V-0), BLACK.
- 2. TERMINAL : S.Q. 0.50mm COPPER ALLOY.

**SPECIFICATION**

- 1. CURRENT RATING : 1 AMP. MAX.
- 2. DIELECTRIC WITHSTANDING VOLTAGE : 500V AC R.M.S. FOR ONE MINUTE.
- 3. INSULATION RESISTANCE : 1000M OHMS MIN. AT 500V DC.
- 4. OPERATING TEMPERATURE : -40°C TO +85°C.
- 5. MAX. PROCESSING TEMP. : 230°C FOR 30 ~ 60 SECONDS.

**ORDER INFORMATION :**



RECOMMEND P.C.B. LAYOUT  
TOP VIEW

| NUMBER OF POSITION | DIMENSIONS   |             | NUMBER OF POSITION | DIMENSIONS   |              |
|--------------------|--------------|-------------|--------------------|--------------|--------------|
|                    | A            | B           |                    | A            | B            |
| 10                 | 25.70[1.012] | 8.00[.315]  | 26                 | 41.70[1.642] | 24.00[.945]  |
| 12                 | 27.70[1.091] | 10.00[.394] | 30                 | 45.70[1.799] | 28.00[1.102] |
| 14                 | 29.70[1.169] | 12.00[.472] | 34                 | 49.70[1.957] | 32.00[1.260] |
| 16                 | 31.70[1.248] | 14.00[.551] | 40                 | 55.70[2.193] | 38.00[1.496] |
| 20                 | 35.70[1.406] | 18.00[.709] | 44                 | 59.70[2.350] | 42.00[1.654] |
| 22                 | 37.70[1.484] | 20.00[.787] | 50                 | 65.70[2.587] | 48.00[1.890] |
| 24                 | 39.70[1.563] | 22.00[.866] | 68                 | 83.70[3.295] | 66.00[2.598] |

|                   |      |               |      |
|-------------------|------|---------------|------|
| TOLERANCE         |      | DRAWER        |      |
| .0=±.0.30 [.012]  |      | SUB           |      |
| .00=±0.20 [.008]  |      | CHECK         |      |
| .000=±.XXX        |      | Katherine     |      |
| .0000=±.          |      | APP'D         |      |
| ANG.=±3°          |      | ALBT          |      |
|                   |      | PRODUCT SPEC. |      |
| UNITS : mm [inch] |      | —             |      |
| SCALE             | SIZE | SHEET         | REV. |
| NONE              | A4   | 1 OF 1        | A    |

|                            |  |
|----------------------------|--|
| <b>Astron</b>              |  |
| ASTRON TECHNOLOGY CORP.    |  |
| NAME SHROUDED HEADER       |  |
| 2.00mm PITCH, P.C.B. MOUNT |  |
| SMT, EJECTOR TYPE          |  |
| DRAW NO. C326-4802         |  |
| 10018                      |  |