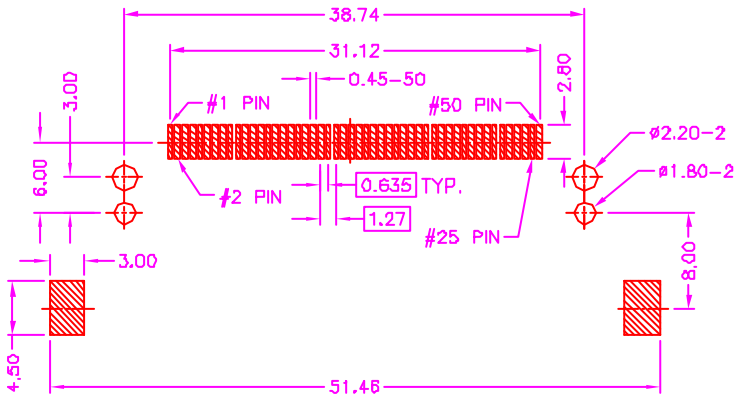
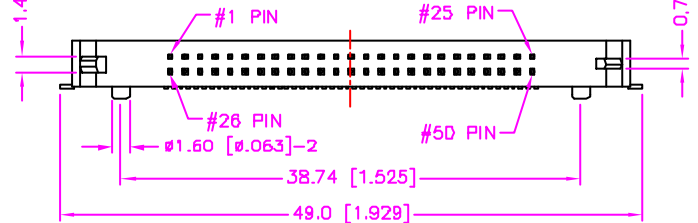
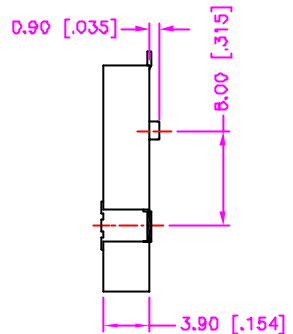
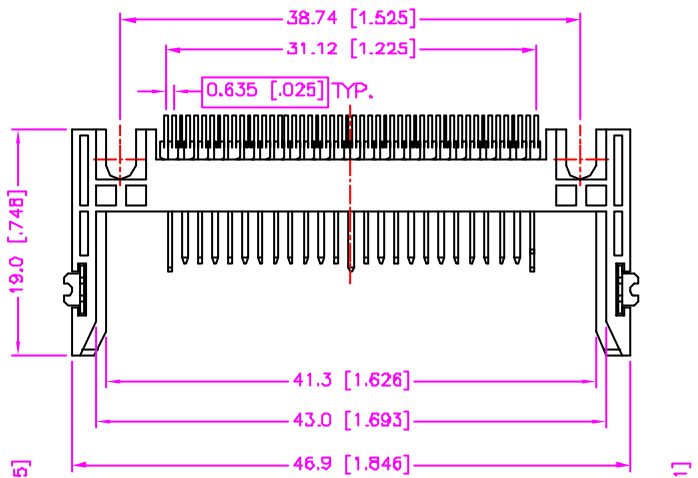


REV.	DESCRIPTION	DATE
—	RELEASE	Feb. 07, 2003
1	DRAW MODIFY	Sep. 15, 2003
2		



RECOMMEND P.C.B. LAYOUT
TOP VIEW

MATERIALS

- HOUSING : HI.-TEMP. PLASTIC (UL 94V-0).
- TERMINAL : COPPER ALLOY, GOLD PLATING ON CONTACT AREA, TIN/LEAD PLATING ON SOLDER TAIL.
- SOLDER TAB : BRASS, TIN/LEAD PLATING.

SPECIFICATION

- CURRENT RATING : 0.5 AMP. MAX.
- DIELECTRIC WITHSTANDING VOLTAGE : 500V AC R.M.S. FOR ONE MINUTE.
- INSULATION RESISTANCE : 1000M OHMS MIN. AT 500V DC.
- OPERATING TEMPERATURE : -40°C TO +85°C.
- MAX. PROCESSING TEMP. : 230°C FOR 30 ~ 60 SECONDS.

ORDER INFORMATION :

54 - 71 28 - 50 W

SERIES CODE | TYPE 28 | WHITE IN HOUSING COLOR | NUMBER OF POSITIONS

PIN NUMBER	CONTACT LENGTH ±0.15 [±.006]
25, 26	3.50 [.138]
ALL OTHER PINS	4.25 [.167]
1, 13, 38, 50	5.00 [.197]

TOLERANCE .0=±0.30 [.012] .00=±0.20 [.008] .000=±.xxx .0000=±. ANG.=±3°	DRAWER <i>Katherlin</i>	 ASTRON TECHNOLOGY CORP.
	CHECK <i>MUS</i>	
 UNITS : mm [inch]	APP'D <i>LTON</i>	CF CARD (TYPE ,). 1.27mm PITCH SMT TYPE, MALE (NORMAL TYPE)
	SCALE NONE	SIZE A4
SHEET 1 OF 1	REV. B	05001