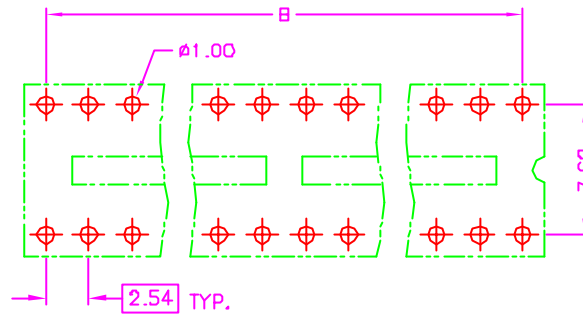
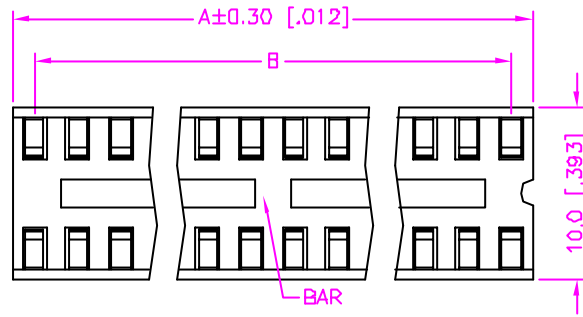


REV.	DESCRIPTION	DATE
—	RELEASE	Jun. 14, 2002
1		
2		



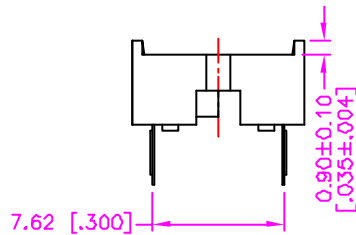
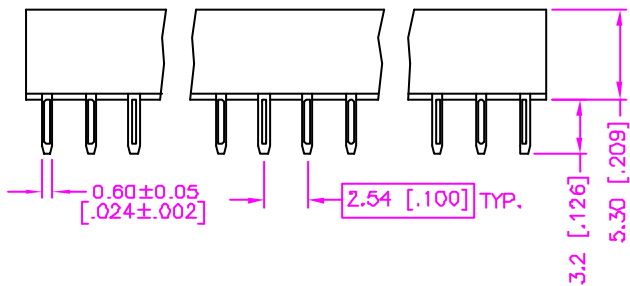
RECOMMEND P.C.B. LAYOUT  
BOTTOM VIEW

**MATERIALS**

1. HOUSING : POLYESTER (UL 94V-0), BLACK.
2. TERMINAL : PHOSPHOR BRONZE.

**SPECIFICATION**

1. CURRENT RATING : 1 AMP MAX.
2. DIELECTRIC WITHSTANDING VOLTAGE : 1000V AC R.M.S. FOR ONE MINUTE.
3. INSULATION RESISTANCE : 5000M OHMS MIN. AT 500V DC.
4. CONTACT RESISTANCE : 30m OHMS MAX.
5. OPERATING TEMPERATURE : -55°C TO +105°C.



NUMBER OF POSITIONS	DIMENSION		BAR OPTIONS	
	A	B	WITH BAR	W/O BAR
6	7.62 [.300]	5.08 [.200]		○
8	10.16 [.400]	7.62 [.300]		○
14	17.78 [.700]	15.24 [.600]		○
16	20.32 [.800]	17.78 [.700]		○
18	22.86 [.900]	20.32 [.800]		○
20	25.40 [1.000]	22.86 [.900]		○
22	27.94 [1.100]	25.40 [1.000]		○
24	30.48 [1.200]	27.94 [1.100]	○	
28	35.56 [1.400]	33.02 [1.300]	○	
32	40.64 [1.600]	38.10 [1.500]	○	

**ORDER INFORMATION :**

40 - 01 3 A - \*\* - T

SERIES CODE

ROWS SPACING 7.62mm (0.3")

TIN PLATING ON TERMINAL

TOTAL NUMBER OF POSITIONS

BAR OPTIONS

A : WITHOUT BAR  
BLANK : WITH BAR

TOLERANCE .0=±.0.30 [.012] .00=±.0.20 [.008] .000=±.XXX .0000=±. ANG.=±3°		DRAWER <i>Katherlin</i>	 <b>ASTRON TECHNOLOGY CORP.</b> NAME DIP SOCKET 2.54mm PITCH, DUAL IN-LINE, P.C.B. MOUNT, VERTICAL, (0.3")
UNITS : mm [inch]		CHECK <i>Wisey</i> APP'D PRODUCT SPEC.	
SCALE NONE	SIZE A4	SHEET 1 OF 1	REV. A
DRAW NO. C240-0101		DRAW NO. C240-0101	
07001		07001	