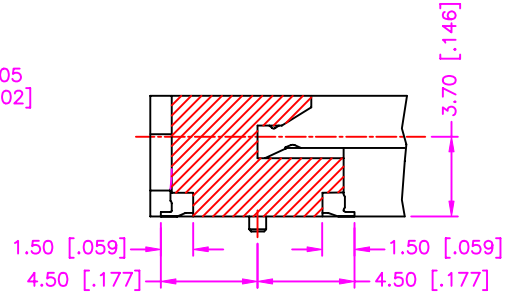
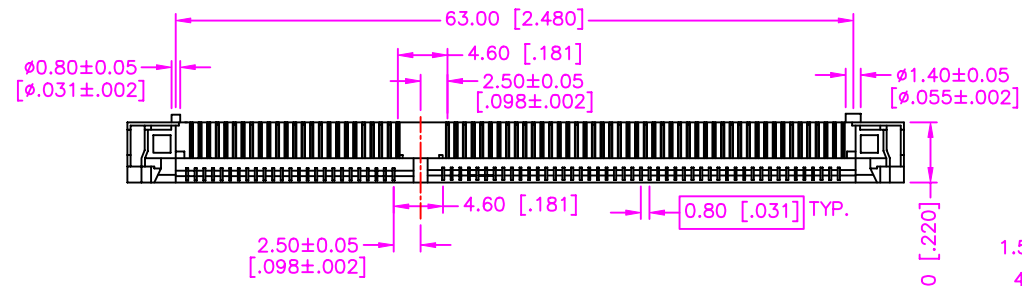
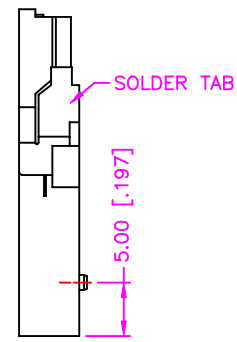
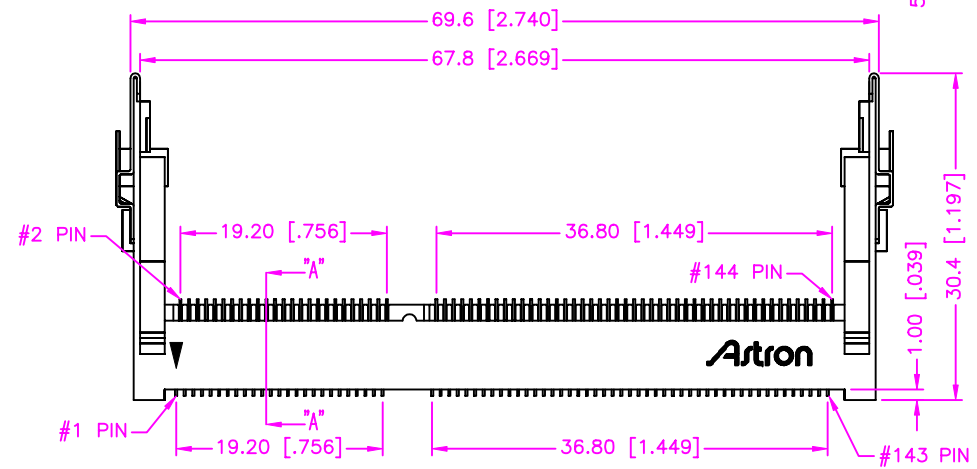


REV.	DESCRIPTION	DATE
—	RELEASE	Jun. 24, 2002
1		
2		



A - A SECTION



SOLDER TAB

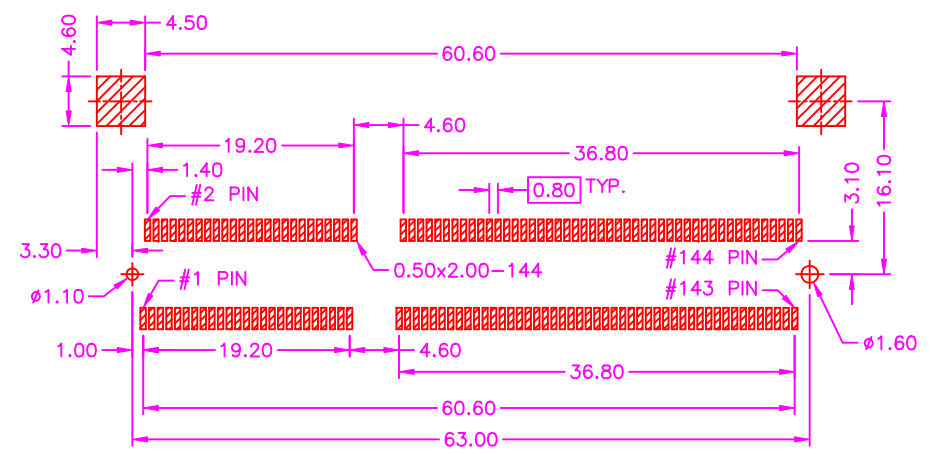
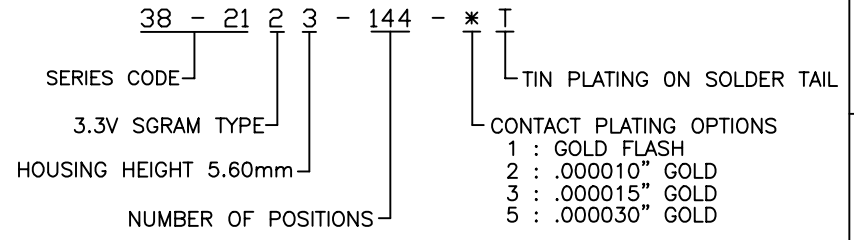
MATERIALS

1. HOUSING : HI.-TEMP. PLASTIC (UL 94V-0), WHITE.
2. TERMINAL : COPPER ALLOY. (t=0.20mm)
3. SOLDER TAB : COPPER ALLOY, TIN PLATING. (t=0.30mm)

SPECIFICATION

1. CURRENT RATING : 0.5 AMP. MAX.
2. DIELECTRIC WITHSTANDING VOLTAGE : 250V AC R.M.S. FOR ONE MINUTE.
3. INSULATION RESISTANCE : 1000M OHMS MIN. AT 250V DC.
4. CONTACT RESISTANCE : 50m OHMS MAX.
5. OPERATING TEMPERATURE : -55°C TO +105°C.
6. DURABILITY : 25 CYCLES MIN.
7. MAX. PROCESSING TEMP. : 230°C FOR 30 ~ 60 SECONDS.
8. VOLTAGE RATING : 100V R.M.S. MAX.

ORDER INFORMATION :



RECOMMEND P.C.B. LAYOUT TOP VIEW

TOLERANCE .0=±0.30 [.012] .00=±0.20 [.008] .000=±.XXX .0000=±. ANG.=±3°		DRAWER <i>Katherlin</i> CHECK <i>RU8</i>	 ASTRON TECHNOLOGY CORP.
UNITS : mm [inch] NONE A4		APP'D <i>WY&LY</i>	
SCALE NONE A4		PRODUCT SPEC. 223-0002	DRAW NO. C238-2102
SHEET 1 OF 1		REV. A	08012