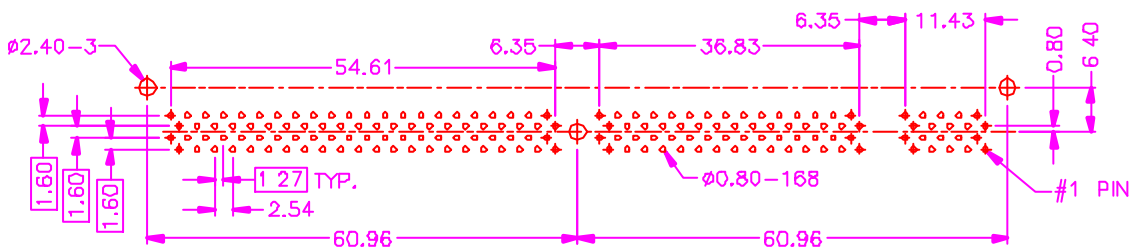
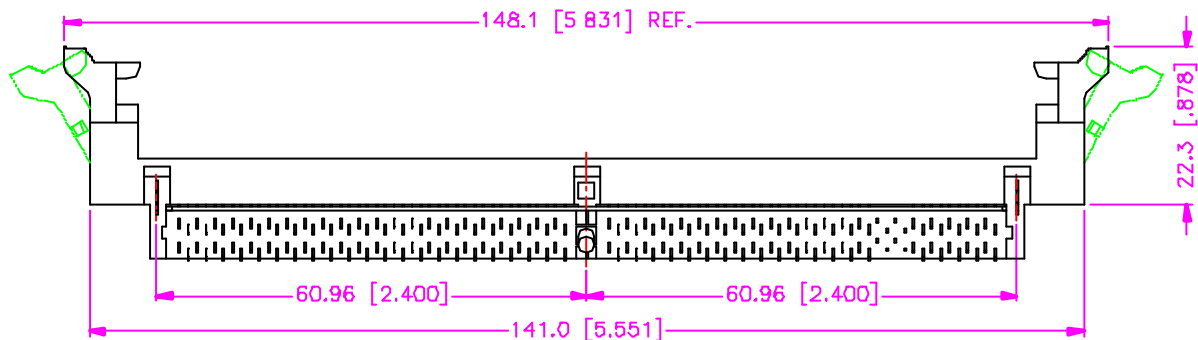
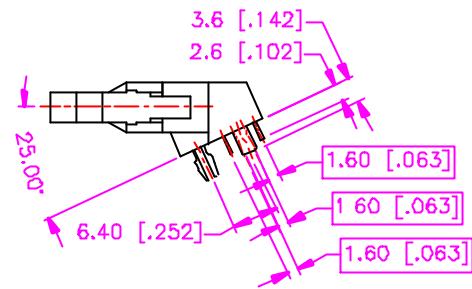
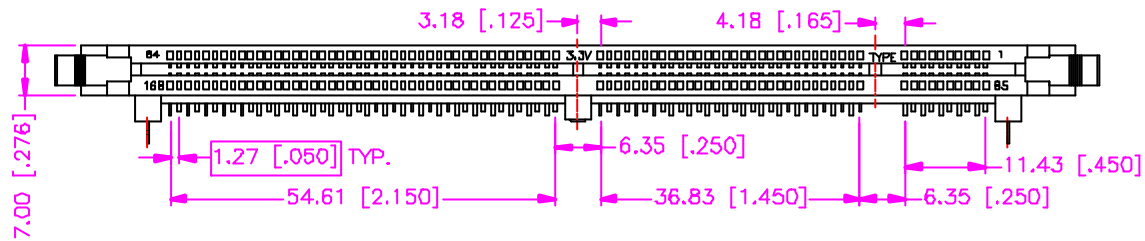


REV.	DESCRIPTION	DATE
—	RELEASE	Jun. 1, 2001
1		
2		



RECOMMEND P.C.B. LAYOUT
BOTTOM VIEW

ORDER INFORMATION

38 - 03 02 - 168 - * T

SERIES CODE | TIN PLATING ON SOLDER TAIL

3.3V UDRAM, HIGH LATCH, ACD TYPE | CONTACT PLATING OPTIONS

NUMBER OF POSITION |

1 : GOLD FLASH
2 : .000010" GOLD
3 : .000015" GOLD
5 : .000030" GOLD

MATERIALS

1. HOUSING : THERMOPLASTIC (UL 94V-0), BLACK.
2. LATCH : POLYAMIDE (UL 94V-0), WHITE.
3. TERMINAL : COPPER ALLOY. (t=0.25mm)

SPECIFICATION

1. CURRENT RATING : 1 AMP. MAX.
2. DIELECTRIC WITHSTANDING VOLTAGE : 500V AC R.M.S. FOR ONE MINUTE.
3. INSULATION RESISTANCE : 1000M OHMS MIN. AT 500V DC.
4. CONTACT RESISTANCE : 30m OHMS MAX.
5. OPERATING TEMPERATURE : -55°C TO +105°C.

TOLERANCE		DRAWER	Astron
.0=±.30 [.012] .00=±.20 [.008] .000=± XXX		CHECK	
.0000±. ANG.=±3°		APP'D	NAME
		PRODUCT SPEC.	DIMM 168P SOCKET P.C.B. MOUNT 25° 3.3V, UDRAM (1.60mm PITCH)
UNITS : mm [inch]	SCALE	SHEET	DRAW NO.
NONE	SIZE A4	1 OF 1	C238-0303
		REV. A	15014