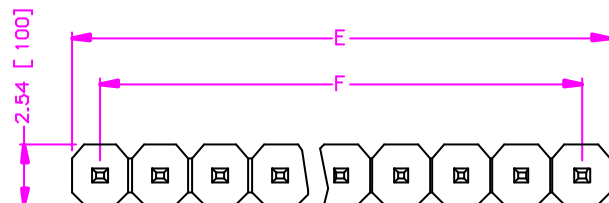


REV.	DESCRIPTION	DATE
—	RELEASE	SEP. 11, 2001
1		
2		

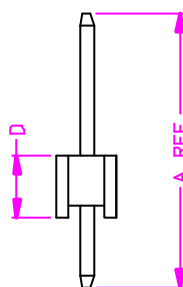
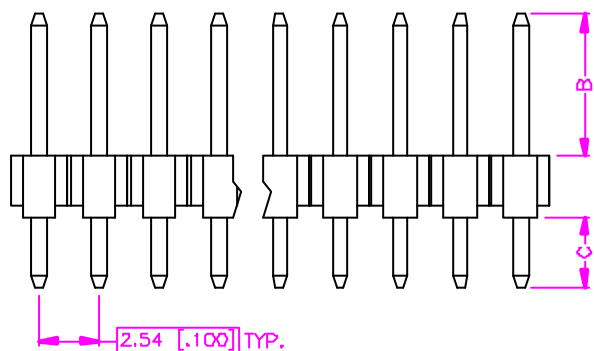


$$E = (\text{NO. OF POSITION PER ROW}) \times 2.54 \pm 0.40$$

$$(\text{NO. OF POSITION PER ROW}) \times 100 \pm 0.16$$

$$F = (\text{NO. OF POSITION PER ROW} - 1) \times 2.54$$

$$(\text{NO. OF POSITION PER ROW} - 1) \times 100$$



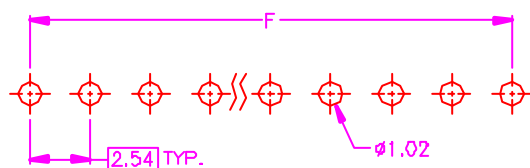
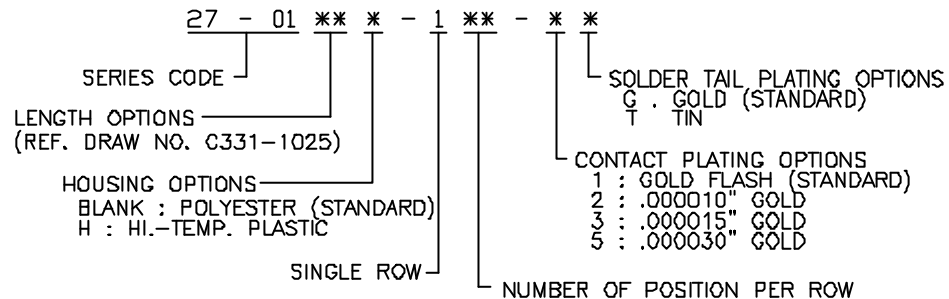
MATERIALS

1. HOUSING : THERMOPLASTIC (UL 94V-0), BLACK.
2. TERMINAL : S.G. 0.64mm COPPER ALLOY.



SPECIFICATION

1. CURRENT RATING : 3 AMP. MAX.
2. DIELECTRIC WITHSTANDING VOLTAGE : 1000V AC R.M.S. FOR ONE MINUTE.
3. INSULATION RESISTANCE : 5000M OHMS MIN. AT 1000V DC.
4. OPERATING TEMPERATURE : -55°C TO +105°C
5. MAX. PROCESSING TEMPERATURE : 230°C FOR 30 ~ 60 SECONDS. (HI.-TEMP. PLASTIC)

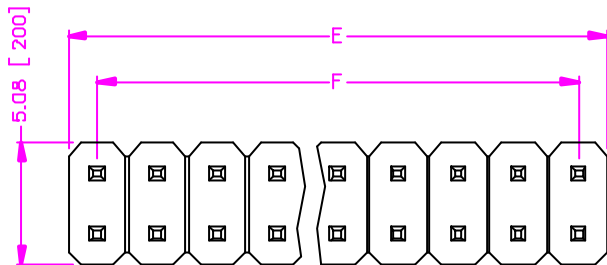
ORDER INFORMATION :



RECOMMEND P.C.B. LAYOUT
 BOTTOM VIEW

TOLERANCE .0 = ±0.30 [.012] .00 = ±0.20 [.008] .000 = ±.XXX .0000 = ± ANG. = ±3°	DRAWER <i>MUS</i>	 ASTRON TECHNOLOGY CORP.		
 UNITS mm [inch]	CHECK <i>Katherine</i>		NAME POST HEADER	
SCALE NONE	SIZE A4	APP'D <i>ALBT</i>	PRODUCT SPEC —	2.54mm PITCH, P.C.B. MOUNT VERTICAL
				DRAW NO. C331-1022
		SHEET 1 OF 1	REV.	

REV.	DESCRIPTION	DATE
—	RELEASE	Sep. 11, 2001
1		
2		



$$E = (\text{NO. OF POSITION PER ROW}) \times 2.54 \pm 0.40$$

$$F = (\text{NO. OF POSITION PER ROW} - 1) \times 2.54$$

MATERIALS

- HOUSING : THERMOPLASTIC (UL 94V-0), BLACK.
- TERMINAL : S.Q. 0.64mm COPPER ALLOY

SPECIFICATION

- CURRENT RATING 3 AMP MAX.
- DIELECTRIC WITHSTANDING VOLTAGE : 1000V AC R.M.S FOR ONE MINUTE
- INSULATION RESISTANCE : 5000M OHMS MIN. AT 1000V DC.
- OPERATING TEMPERATURE : -55°C TO +105°C.
- MAX PROCESSING TEMPERATURE 230°C FOR 30 ~ 60 SECONDS. (HI.-TEMP. PLASTIC)

ORDER INFORMATION :

27 - 01 ** * - 2 ** - * *

SERIES CODE

LENGTH OPTIONS (REF. DRAW NO. C331-1025)

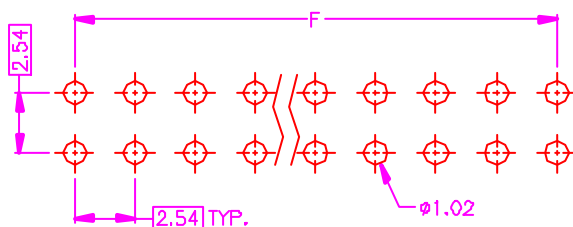
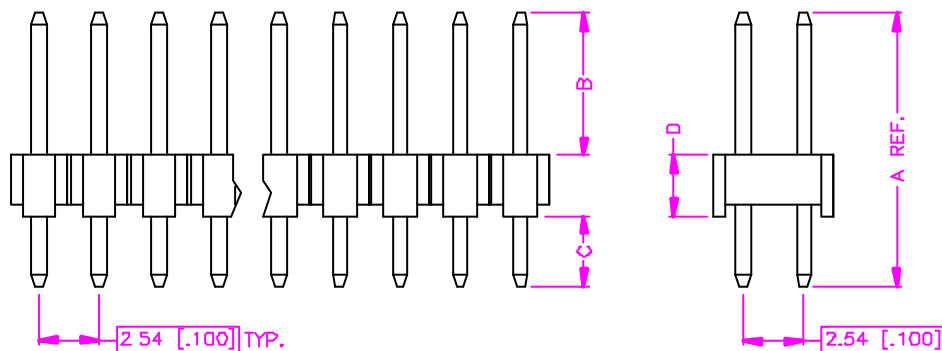
HOUSING OPTIONS
 BLANK POLYESTER (STANDARD)
 H : HI.-TEMP. PLASTIC

DUAL ROWS

SOLDER TAIL PLATING OPTIONS
 G : GOLD (STANDARD)
 T : TIN

CONTACT PLATING OPTIONS
 1 : GOLD FLASH (STANDARD)
 2 : .000010" GOLD
 3 : .000015" GOLD
 5 : .000030" GOLD

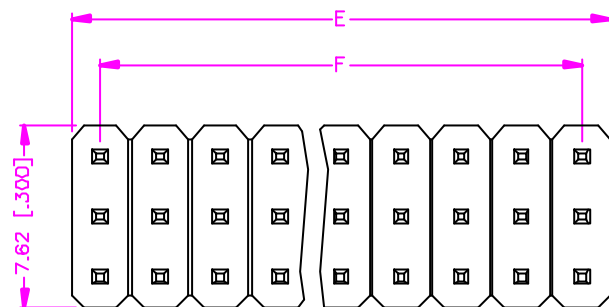
NUMBER OF POSITION PER ROW



RECOMMEND P.C.B. LAYOUT
 BOTTOM VIEW

TOLERANCE .0=±0.30 [.012] .00=±0.20 [.008] .000=±.XXX .0000=± ANG.=±3'	DRAWER <i>NUS</i>	 ASTRON TECHNOLOGY CORP.		
 UNITS : mm [inch]	CHECK <i>Katherine</i>		NAME POST HEADER 2.54mm PITCH, P.C.B. MOUNT VERTICAL	
SCALE NONE	SIZE A4	SHEET 1 OF 1	REV.	DRAW NO. C331-1023

REV.	DESCRIPTION	DATE
—	RELEASE	9ep. 11, 2001
1		
2		



$$E = \{(\text{NO. OF POSITION PER ROW}) \times 2.54 \pm 0.40\}$$

$$(\text{NO. OF POSITION PER ROW}) \times .100 \pm .016$$

$$F = \{(\text{NO. OF POSITION PER ROW} - 1) \times 2.54\}$$

$$(\text{NO. OF POSITION PER ROW} - 1) \times .100$$

MATERIALS

1. HOUSING : THERMOPLASTIC (UL 94V-0), BLACK.
2. TERMINAL : S Q. 064mm COPPER ALLOY

SPECIFICATION

1. CURRENT RATING : 3 AMP MAX.
2. DIELECTRIC WITHSTANDING VOLTAGE : 1000V AC R.M.S FOR ONE MINUTE.
3. INSULATION RESISTANCE : 5000M OHMS MIN. AT 1000V DC.
4. OPERATING TEMPERATURE : -55°C TO +105°C.
5. MAX. PROCESSING TEMPERATURE : 230°C FOR 30 ~ 60 SECONDS. (HI.-TEMP. PLASTIC)

ORDER INFORMATION :

27 - 01 ** * - 3 ** - * *

SERIES CODE —————

LENGTH OPTIONS (REF DRAW NO C331-1025) —————

HOUSING OPTIONS —————

BLANK POLYESTER (STANDARD)

H : HI.-TEMP. PLASTIC

TRIPLE ROWS —————

SOLDER TAIL PLATING OPTIONS

G : GOLD (STANDARD)

T : TIN

CONTACT PLATING OPTIONS

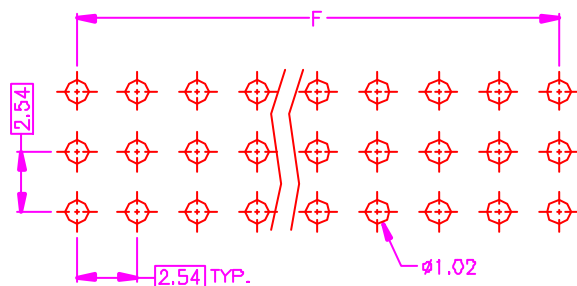
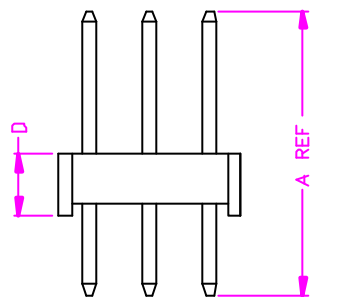
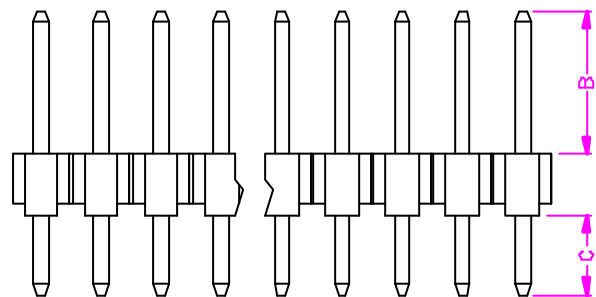
1 : GOLD FLASH (STANDARD)

2 : .000010" GOLD

3 : .000015" GOLD

5 : .000030" GOLD

NUMBER OF POSITION PER ROW —————



TOLERANCE	DRAWER	Astron
.0=±0.30 [.012]	<i>MUS</i>	
.00=±0.20 [.008]	CHECK	ASTRON TECHNOLOGY CORP.
.000=±.XXX	<i>Katherine</i>	NAME
.0000=±	APP'D	POST HEADER
ANG.=±3°	<i>ASER</i>	2.54mm PITCH, P.C.B. MOUNT
	PRODUCT SPEC	VERTICAL
UNITS mm [inch]		DRAW NO.
SCALE NONE	SIZE A4	C331-1024
SHEET 1 OF 1	REV.	

TYPE	A	B	C	D	DATE
01	14.08[.554]	8.54[.336]	3.00[.118]	2.54[.100]	Sep. 11, 2001
02	REFERENCE DRAW NO. C331-1002				
03	11.60[.457]	6.06[.239]	3.00[.118]	2.54[.100]	Sep. 11, 2001
04	11.43[.450]	5.75[.226]	3.14[.124]	2.54[.100]	Sep. 11, 2001
05	14.20[.559]	5.83[.230]	5.83[.230]	2.54[.100]	Sep. 11, 2001
06	10.92[.430]	5.84[.230]	2.54[.100]	2.54[.100]	Sep. 11, 2001
07	8.64[.340]	3.43[.135]	2.67[.105]	2.54[.100]	Sep. 11, 2001
08	11.60[.457]	5.76[.227]	3.30[.130]	2.54[.100]	Sep. 11, 2001
09	21.00[.827]	15.76[.620]	2.70[.106]	2.54[.100]	Sep. 11, 2001
10	24.00[.945]	13.96[.550]	7.50[.295]	2.54[.100]	Sep. 11, 2001
11	10.79[.425]	5.84[.230]	2.41[.095]	2.54[.100]	Sep. 11, 2001
12	13.50[.531]	8.12[.320]	2.84[.112]	2.54[.100]	Sep. 11, 2001
13	9.54[.376]	4.00[.157]	3.00[.118]	2.54[.100]	Sep. 11, 2001
14	19.10[.752]	13.44[.529]	3.12[.123]	2.54[.100]	Sep. 11, 2001
15	18.54[.730]	13.21[.520]	2.79[.110]	2.54[.100]	Sep. 11, 2001
16	16.00[.630]	10.16[.400]	3.30[.130]	2.54[.100]	Sep. 11, 2001
17	13.70[.539]	8.16[.321]	3.00[.118]	2.54[.100]	Sep. 11, 2001
18	24.00[.945]	15.66[.617]	5.80[.228]	2.54[.100]	Sep. 11, 2001
19	11.43[.450]	6.00[.236]	2.89[.114]	2.54[.100]	Sep. 11, 2001
20	22.00[.866]	12.46[.491]	7.00[.276]	2.54[.100]	Sep. 11, 2001
21	10.92[.430]	5.84[.230]	2.54[.100]	2.54[.100]	Sep. 11, 2001
22	12.82[.505]	5.96[.235]	4.32[.170]	2.54[.100]	Sep. 11, 2001
23	11.60[.457]	5.06[.199]	4.00[.157]	2.54[.100]	Sep. 11, 2001
24	26.00[1.024]	20.75[.817]	2.71[.107]	2.54[.100]	Sep. 11, 2001
25	11.00[.433]	5.96[.235]	2.50[.098]	2.54[.100]	Sep. 11, 2001
26	10.83[.426]	4.99[.196]	3.30[.130]	2.54[.100]	Sep. 11, 2001
27	10.93[.430]	6.10[.240]	2.29[.090]	2.54[.100]	Sep. 11, 2001
28	12.19[.480]	6.73[.265]	2.92[.115]	2.54[.100]	Sep. 11, 2001
29	17.02[.670]	8.13[.320]	6.35[.250]	2.54[.100]	Sep. 11, 2001
30	12.19[.480]	6.73[.265]	2.92[.115]	2.54[.100]	Sep. 11, 2001

TYPE	A	B	C	D	DATE
31	13.90[.547]	8.36[.329]	3.00[.118]	2.54[.100]	Sep. 11, 2001
32	13.40[.528]	6.00[.236]	3.00[.118]	4.40[.173]	Sep. 11, 2001
33	12.19[.480]	6.73[.265]	2.92[.115]	2.54[.100]	Sep. 11, 2001
34	13.74[.541]	8.00[.315]	3.20[.126]	2.54[.100]	Sep. 11, 2001
35	13.46[.530]	8.64[.340]	2.28[.090]	2.54[.100]	Sep. 11, 2001
36	13.46[.530]	5.84[.230]	5.08[.200]	2.54[.100]	Sep. 11, 2001
37	13.84[.545]	5.97[.235]	5.33[.210]	2.54[.100]	Sep. 11, 2001
38	15.54[.612]	10.00[.394]	3.00[.118]	2.54[.100]	Sep. 11, 2001
39	9.53[.375]	2.67[.105]	4.32[.170]	2.54[.100]	Sep. 11, 2001
40	20.04[.789]	14.50[.571]	3.00[.118]	2.54[.100]	Sep. 11, 2001
41	14.20[.559]	8.46[.333]	3.20[.126]	2.54[.100]	Sep. 11, 2001
42	16.00[.630]	8.13[.320]	5.33[.210]	2.54[.100]	Apr. 25, 2002
43	12.19[.480]	6.75[.266]	2.90[.114]	2.54[.100]	Apr. 25, 2002
44	18.50[.728]	8.50[.335]	7.46[.294]	2.54[.100]	May 29, 2002
45	17.02[.670]	11.00[.433]	3.48[.137]	2.54[.100]	Oct. 01, 2002
46	26.00[1.024]	5.76[.227]	17.70[.697]	2.54[.100]	Oct. 08, 2002
47	12.82[.505]	6.70[.264]	3.58[.141]	2.54[.100]	Oct. 16, 2002
48	12.82[.505]	7.00[.276]	3.28[.129]	2.54[.100]	Oct. 18, 2002
49	13.84[.545]	8.08[.318]	3.22[.127]	2.54[.100]	Oct. 23, 2002
50	12.34[.486]	6.80[.268]	3.00[.118]	2.54[.100]	Nov. 08, 2002
51	11.43[.450]	5.92[.233]	2.97[.117]	2.54[.100]	Nov. 12, 2002
52	11.60[.457]	6.56[.258]	2.50[.098]	2.54[.100]	Jan. 24, 2003
53	7.60[.299]	3.80[.150]	2.30[.091]	1.50[.059]	Feb. 07, 2003
54					
55					
56					
57					
58					
59					
60					

FOR DRAW NO. : C331-1022
C331-1023
C331-1024

TOLERANCE .0=±.X .00=±.XX .000=±.XXX .0000=±. ANG.=±3'		DRAWER <i>Katherine</i>	ASTRON TECHNOLOGY CORP.
UNITS : mm [inch]		CHECK <i>FUB</i>	
SCALE NONE SIZE A4		APP'D <i>APL</i>	NAME LENGTH OPTIONS FOR POST HEADER 2.54mm PITCH, VERTICAL
SHEET 1 OF 1		PRODUCT SPEC. —	DRAW NO. C331-1025
REV.			