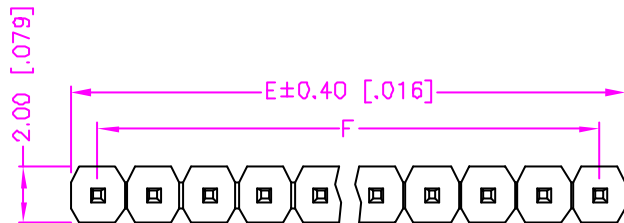


REV.	DESCRIPTION	DATE
—	RELEASE	Aug. 21, 2003
1		
2		



$$E = (\text{NO. OF POSITION PER ROW}) \times 2.00$$

$$(\text{NO. OF POSITION PER ROW}) \times 0.079$$

$$F = (\text{NO. OF POSITION PER ROW} - 1) \times 2.00$$

$$(\text{NO. OF POSITION PER ROW} - 1) \times 0.079$$

MATERIALS

1. HOUSING : THERMOPLASTIC (UL 94V-0), BLACK.
2. TERMINAL : S.Q. 0.50mm COPPER ALLOY.

SPECIFICATION

1. CURRENT RATING : 1 AMP. MAX.
2. DIELECTRIC WITHSTANDING VOLTAGE : 800V AC R.M.S. FOR ONE MINUTE.
3. INSULATION RESISTANCE : 5000M OHMS MIN. AT 500V DC.
4. OPERATING TEMPERATURE : -55°C TO +105°C.
5. MAX. PROCESSING TEMPERATURE : 230°C FOR 30 ~ 60 SECONDS. (HI.-TEMP. PLASTIC)

ORDER INFORMATION :

27 - 22 ** * - 1 ** - * *

SERIES CODE

LENGTH OPTIONS (REF. DRAW NO. C332-2017)

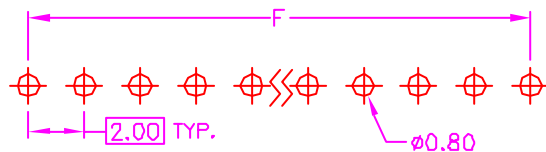
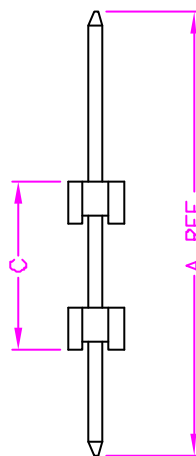
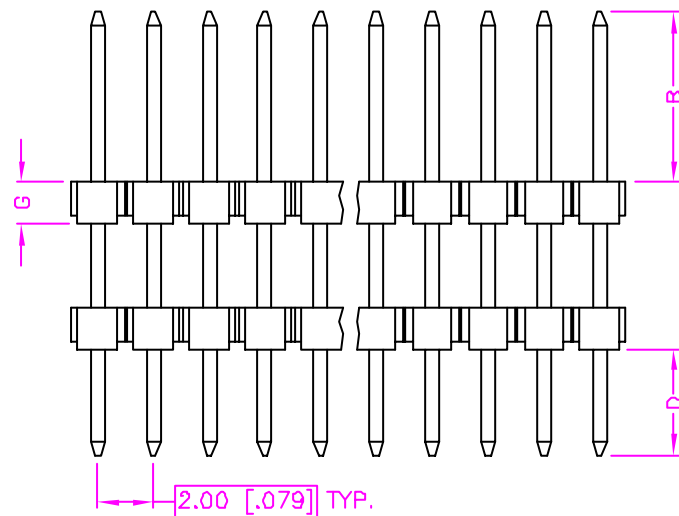
HOUSING OPTIONS
 BLANK : POLYESTER (STANDARD)
 H : HI.-TEMP. PLASTIC

SOLDER TAIL PLATING OPTIONS
 G : GOLD (STANDARD)
 T : TIN

CONTACT PLATING OPTIONS
 1 : GOLD FLASH (STANDARD)
 2 : .000010" GOLD
 3 : .000015" GOLD
 5 : .000030" GOLD

SINGLE ROW

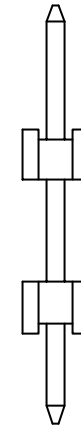
NUMBER OF POSITION PER ROW



**RECOMMEND P.C.B. LAYOUT
TOP VIEW**

TOLERANCE .0=±.0.30 [.012] .00=±0.20 [.008] .000=±.xxx .0000=±. ANG.=±3°	DRAWER <i>MUB</i> CHECK <i>Katherlin</i> APP'D <i>APB</i>	Astron ASTRON TECHNOLOGY CORP. NAME POST HEADER 2.00mm PITCH, P.C.B. MOUNT VERTICAL, ELEVATE TYPE
	PRODUCT SPEC. —	
UNITS : mm [inch]	SCALE NONE	DRAW NO. C332-2013
SIZE A4	SHEET 1 OF 1	REV.

TYPE	A	B	C	D	G	DATE	NOTE
01	14.00[.551]	4.00[.157]	6.50[.256]	3.50[.138]	2.00[.079]	Sep. 20, 2001	
02	19.10[.752]	4.75[.187]	9.65[.380]	4.70[.185]	1.50[.059]	Sep. 20, 2001	
03	14.27[.562]	2.54[.100]	5.89[.232]	5.84[.230]	1.50[.059]	Sep. 20, 2001	SEE NOTE 1
04	14.30[.563]	4.00[.157]	7.50[.295]	2.80[.110]	2.00[.079]	Sep. 20, 2001	
05	16.51[.650]	2.54[.100]	11.43[.450]	2.54[.100]	2.00[.079]	Sep. 20, 2001	
06	16.00[.630]	4.00[.157]	8.50[.335]	3.50[.138]	2.00[.079]	Sep. 20, 2001	
07	22.00[.866]	3.00[.118]	16.00[.630]	3.00[.118]	2.00[.079]	Sep. 20, 2001	
08	32.80[1.291]	5.80[.228]	24.00[.945]	3.00[.118]	2.00[.079]	Sep. 20, 2001	
09	29.40[1.157]	3.40[.134]	22.00[.866]	4.00[.157]	1.50[.059]	Sep. 20, 2001	
10	28.19[1.110]	10.16[.400]	15.24[.600]	2.79[.110]	2.00[.079]	Sep. 20, 2001	
11	11.35[.447]	6.35[.250]	3.00[.118]	2.00[.079]	1.50[.059]	Sep. 20, 2001	
12	14.10[.555]	4.65[.183]	4.83[.190]	4.62[.182]	1.50[.059]	Sep. 20, 2001	SEE NOTE 1
13	26.00[1.024]	5.00[.197]	18.00[.709]	3.00[.118]	2.00[.079]	Sep. 20, 2001	
14	35.50[1.398]	3.40[.134]	28.10[1.106]	4.00[.157]	1.50[.059]	Sep. 20, 2001	
15	26.00[1.024]	6.00[.236]	17.00[.669]	3.00[.118]	2.00[.079]	Sep. 20, 2001	
16	22.80[.898]	3.80[.150]	16.00[.630]	3.00[.118]	2.00[.079]	Sep. 20, 2001	
17	9.60[.378]	2.75[.108]	4.57[.180]	2.28[.090]	1.50[.059]	Sep. 20, 2001	SEE NOTE 1
18	14.40[.567]	6.10[.240]	6.00[.236]	2.30[.091]	1.50[.059]	Sep. 20, 2001	
19	20.00[.787]	4.00[.157]	12.00[.472]	4.00[.157]	2.00[.079]	Sep. 20, 2001	
20	16.00[.630]	6.00[.236]	7.50[.295]	2.50[.098]	2.00[.079]	Nov. 15, 2001	
21	17.40[.685]	2.70[.106]	11.20[.441]	3.50[.138]	2.00[.079]	Dec. 05, 2001	
22	25.45[1.002]	4.50[.177]	16.45[.648]	4.50[.177]	2.00[.079]	Jan. 24, 2002	
23	26.95[1.061]	3.95[.156]	20.00[.787]	3.00[.118]	1.50[.059]	Mar. 26, 2002	
24	28.00[1.102]	5.00[.197]	19.00[.748]	4.00[.157]	2.00[.079]	May 14, 2002	
25	7.90[.311]	2.20[.087]	3.50[.138]	2.20[.087]	1.50[.059]/2.00[.079]	May 20, 2002	
26	14.00[.551]	4.00[.157]	6.50[.256]	3.50[.138]	1.50[.059]	May 23, 2002	
27	16.00[.630]	9.00[.354]	4.00[.157]	3.00[.118]	2.00[.079]	Oct. 01, 2002	
28	11.35[.447]	4.00[.157]	3.90[.154]	3.45[.136]	1.50[.059]	Oct. 18, 2002	
29	12.60[.496]	2.90[.114]	5.89[.232]	3.81[.150]	1.50[.059]	Dec. 06, 2002	
30	18.00[.709]	9.00[.354]	6.00[.236]	3.00[.118]	1.50[.059]	Dec. 12, 2002	SEE NOTE 1

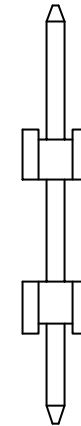


NOTE 1

QUAD ROW HOUSING HEIGHT : 1.50mm
 FOR DRAW NO. : C332-2013 C332-2016
 C332-2014

TOLERANCE .0=±.X .00=±.XX .000=±.XXX .0000=±. ANG.=±3°	DRAWER <i>PUB</i>	Astron ASTRON TECHNOLOGY CORP. NAME LENGTH OPTIONS FOR POST HEADER 2.00mm PITCH, ELEVATE DRAW NO. C332-2017-1
	CHECK <i>Katherlin</i>	
 UNITS : mm [inch]	APP'D <i>AL&T</i>	PRODUCT SPEC. —
	SCALE NONE	SIZE A4
		REV.

TYPE	A	B	C	D	G	DATE	NOTE
31	18.40[.724]	4.00[.157]	11.60[.457]	2.80[.110]	2.00[.079]	Dec. 18, 2002	
32	22.00[.866]	4.00[.157]	14.00[.551]	4.00[.157]	2.00[.079]	Jan. 27, 2003	
33	21.00[.827]	4.00[.157]	13.00[.512]	4.00[.157]	2.00[.079]	Jan. 27, 2003	
34	10.80[.425]	3.80[.150]	4.00[.157]	3.00[.118]	2.00[.079]	Mar. 17, 2003	
35	25.80[1.016]	4.00[.157]	18.70[.736]	3.10[.122]	1.50[.059]	Mar. 19, 2003	
36	23.90[.941]	3.00[.118]	17.90[.705]	3.00[.118]	2.00[.079]	Apr. 28, 2003	
37	28.40[1.118]	3.00[.118]	22.90[.902]	2.50[.098]	2.00[.079]	May. 12, 2003	
38	13.00[.512]	4.00[.157]	6.00[.236]	3.00[.118]	2.00[.079]	May. 13, 2003	
39	10.50[.413]	4.00[.157]	4.00[.157]	2.50[.098]	1.50[.059]	Jun. 25, 2003	
40	18.00[.709]	3.70[.146]	11.30[.445]	3.00[.118]	2.00[.079]	Jun. 17, 2003	
41							
42							
43							
44							
45							
46							
47							
48							
49							
50							
51							
52							
53							
54							
55							
56							
57							
58							
59							
60							



NOTE 1

QUAD ROW HOUSING HEIGHT : 1.50mm
 FOR DRAW NO. : C332-2013 C332-2016
 C332-2014

TOLERANCE .0=±.X .00=±.XX .000=±.XXX .0000=±. ANG.=±3°		DRAWER <i>PUB</i>	ASTRON TECHNOLOGY CORP.
UNITS : mm [inch]		CHECK <i>Katherlin</i>	
SCALE NONE SIZE A4		APP'D <i>LJON</i>	NAME LENGTH OPTIONS FOR POST HEADER 2.00mm PITCH, ELEVATE
SHEET 2 OF 2		PRODUCT SPEC. —	DRAW NO. C332-2017-2
REV.			