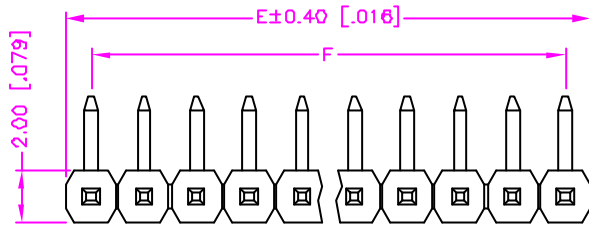


REV.	DESCRIPTION	DATE
—	RELEASE	Aug. 21, 2003
1		
2		



$$E = (\text{NO. OF POSITION PER ROW}) \times 2.00$$

$$(\text{NO. OF POSITION PER ROW}) \times 0.079$$

$$F = (\text{NO. OF POSITION PER ROW} - 1) \times 2.00$$

$$(\text{NO. OF POSITION PER ROW} - 1) \times 0.079$$

MATERIALS

1. HOUSING : THERMOPLASTIC (UL 94V-0), BLACK.
2. TERMINAL : S.Q. 0.50mm COPPER ALLOY.

SPECIFICATION

1. CURRENT RATING : 1 AMP. MAX.
2. DIELECTRIC WITHSTANDING VOLTAGE : 800V AC R.M.S. FOR ONE MINUTE.
3. INSULATION RESISTANCE : 5000M OHMS MIN. AT 500V DC.
4. OPERATING TEMPERATURE : -55°C TO +105°C.
5. MAX. PROCESSING TEMPERATURE : 230°C FOR 30 ~ 60 SECONDS. (HI.-TEMP. PLASTIC)

ORDER INFORMATION :

27 - 23 ** * - 1 ** - * *

SERIES CODE

LENGTH OPTIONS (REF. DRAW NO. C332-3005)

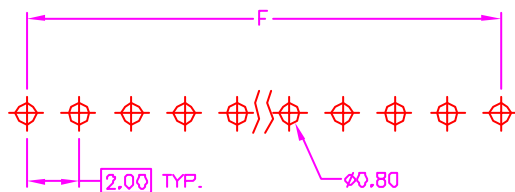
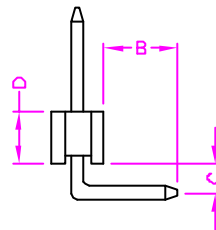
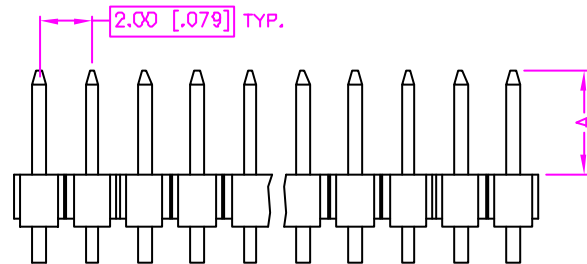
HOUSING OPTIONS
 BLANK : POLYESTER (STANDARD)
 H : HI.-TEMP. PLASTIC

SOLDER TAIL PLATING OPTIONS
 G : GOLD (STANDARD)
 T : TIN


CONTACT PLATING OPTIONS
 1 : GOLD FLASH (STANDARD)
 2 : .000010" GOLD
 3 : .000015" GOLD
 5 : .000030" GOLD

SINGLE ROW

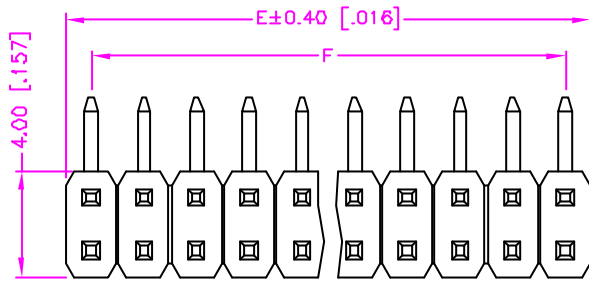
NUMBER OF POSITION PER ROW



RECOMMEND P.C.B. LAYOUT
TOP VIEW

TOLERANCE .0 = ±0.30 [0.012] .00 = ±0.20 [0.008] .000 = ±.XXX .0000 = ±. ANG. = ±3°		DRAWER <i>PLS</i>	 ASTRON TECHNOLOGY CORP.
UNITS : mm [inch]		CHECK <i>Katherine</i>	
SCALE NONE	SIZE A4	APP'D <i>ALB</i>	NAME POST HEADER 2.00mm PITCH, P.C.B. MOUNT RIGHT ANGLE
SHEET 1 OF 1		PRODUCT SPEC. —	DRAW NO. C332-3002
REV.			

REV.	DESCRIPTION	DATE
—	RELEASE	Sep. 25, 2001
1		
2		



$$E = (\text{NO. OF POSITION PER ROW}) \times 2.00$$

$$(\text{NO. OF POSITION PER ROW}) \times 0.079$$

$$F = (\text{NO. OF POSITION PER ROW} - 1) \times 2.00$$

$$(\text{NO. OF POSITION PER ROW} - 1) \times 0.079$$

MATERIALS

1. HOUSING : THERMOPLASTIC (UL 94V-0), BLACK.
2. TERMINAL : S.Q. 0.50mm COPPER ALLOY.

SPECIFICATION

1. CURRENT RATING : 1 AMP. MAX.
2. DIELECTRIC WITHSTANDING VOLTAGE : 800V AC R.M.S. FOR ONE MINUTE. AT 500V DC.
3. INSULATION RESISTANCE : 5000M OHMS MIN.
4. OPERATING TEMPERATURE : -55°C TO +105°C.
5. MAX. PROCESSING TEMPERATURE : 230°C FOR 30 ~ 60 SECONDS. (HI.-TEMP. PLASTIC)

ORDER INFORMATION :

27 - 23 ** * - 2 ** - * *

SERIES CODE

LENGTH OPTIONS (REF. DRAW NO. C332-3005)

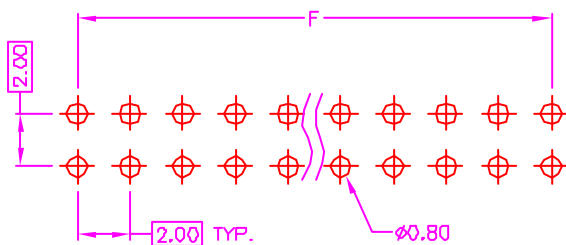
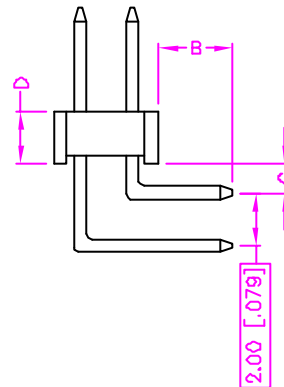
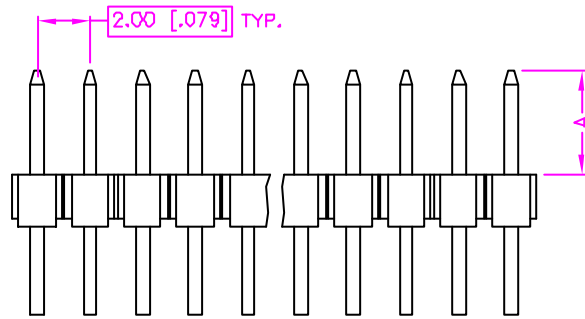
HOUSING OPTIONS
 BLANK : POLYESTER (STANDARD)
 H : HI.-TEMP. PLASTIC

DUAL ROWS

SOLDER TAIL PLATING OPTIONS
 G : GOLD (STANDARD)
 T : TIN

CONTACT PLATING OPTIONS
 1 : GOLD FLASH (STANDARD)
 2 : .000010" GOLD
 3 : .000015" GOLD
 5 : .000030" GOLD

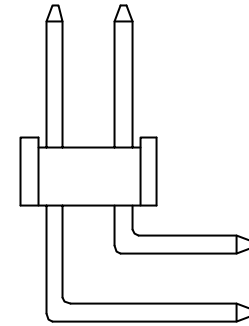
NUMBER OF POSITION PER ROW



RECOMMEND P.C.B. LAYOUT
TOP VIEW

TOLERANCE .0=±.0.30 [.012] .00=±0.20 [.008] .000=±.XXX .0000=±. ANG.=±3°	DRAWER <i>PLS</i>	Astron ASTRON TECHNOLOGY CORP.
UNITS : mm [inch]	CHECK <i>Katherine</i>	
SCALE NONE	APP'D <i>ALB</i>	NAME POST HEADER 2.00mm PITCH, P.C.B. MOUNT RIGHT ANGLE
SIZE A4	PRODUCT SPEC. —	DRAW NO. C332-3003
SHEET 1 OF 1	REV.	

TYPE	A	B	C	D	DATE	NOTE
01	3.70[.146]	3.10[.122]	1.70[.067]	2.00[.079]	Sep. 25, 2001	09001
02	3.00[.118]	3.00[.118]	2.30[.091]	2.00[.079]	Sep. 25, 2001	09001
03	3.70[.146]	3.00[.118]	1.60[.063]	2.00[.079]	Sep. 25, 2001	09001
04	3.90[.154]	2.80[.110]	1.10[.043]	2.00[.079]	Sep. 25, 2001	05005
05	4.00[.157]	2.60[.102]	0.50[.020]	2.00[.079]	Sep. 25, 2001	05005
06	3.90[.154]	4.00[.157]	1.10[.043]	2.00[.079]	Jul. 04, 2002	05005
07	3.50[.138]	3.00[.118]	1.50[.059]	1.50[.059]	Oct. 18, 2002	05005
08	6.45[.254]	2.70[.106]	1.60[.063]	2.00[.079]	Feb. 25, 2003	05005
09	3.70[.146]	3.00[.118]	1.10[.043]	2.00[.079]	Feb. 18, 2004	STANDOFF TOP (05005)
10						
11						
12						
13						
14						
15						
16						
17						
18						
19						
20						
21						
22						
23						
24						
25						
26						
27						
28						
29						
30						



NOTE

FOR DRAW NO. : C332-3002
C332-3003

TOLERANCE .0=±.X .00=±.XX .000=±.XXX .0000=±. ANG.=±3'		DRAWER <i>PUB</i>	ASTRON TECHNOLOGY CORP.
UNITS : mm [inch]		CHECK <i>Katherlin</i>	
SCALE NONE		APP'D <i>ALB</i>	NAME LENGTH OPTIONS FOR POST HEADER 2.00mm FITCH, RIGHT ANGLE
SIZE A4	SHEET 1 OF 1	REV.	DRAW NO. C332-3005