

REV.	DESCRIPTION	DATE
—	RELEASE	Sep. 25, 2001
1	DRAW MODIFY	Jun. 23, 2003
2		

$$E = (\text{NO. OF POSITION PER ROW}) \times 1.27$$

$$(\text{NO. OF POSITION PER ROW}) \times 0.50$$

$$F = (\text{NO. OF POSITION PER ROW} - 1) \times 1.27$$

$$(\text{NO. OF POSITION PER ROW} - 1) \times 0.50$$

**MATERIALS**

1. HOUSING : THERMOPLASTIC (UL 94V-0), BLACK.
2. TERMINAL : S.Q. 0.40mm COPPER ALLOY.

**SPECIFICATION**

1. CURRENT RATING : 1 AMP. MAX.
2. DIELECTRIC WITHSTANDING VOLTAGE : 600V AC R.M.S. FOR ONE MINUTE.
3. INSULATION RESISTANCE : 5000M OHMS MIN. AT 500V DC.
4. OPERATING TEMPERATURE : -55°C TO +105°C.
5. MAX. PROCESSING TEMPERATURE : 230°C FOR 30 ~ 60 SECONDS. (HI.-TEMP. PLASTIC)

**ORDER INFORMATION :**

27 - 43 \*\* \* - 1 \*\* - \* \*

SERIES CODE ————

LENGTH OPTIONS (REF. DRAW NO. C333-3003) ————

HOUSING OPTIONS ————

BLANK : POLYAMIDE (STANDARD)

H : HI.-TEMP. PLASTIC

SOLDER TAIL PLATING OPTIONS

G : GOLD (STANDARD)

T : TIN

CONTACT PLATING OPTIONS

1 : GOLD FLASH (STANDARD)

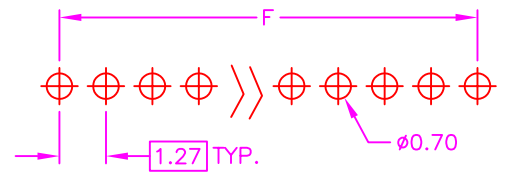
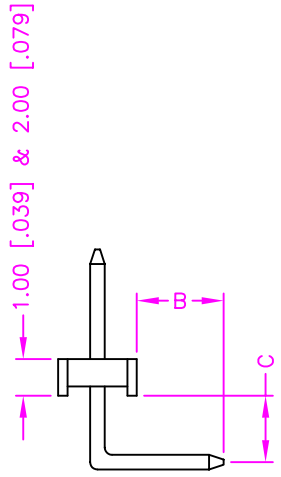
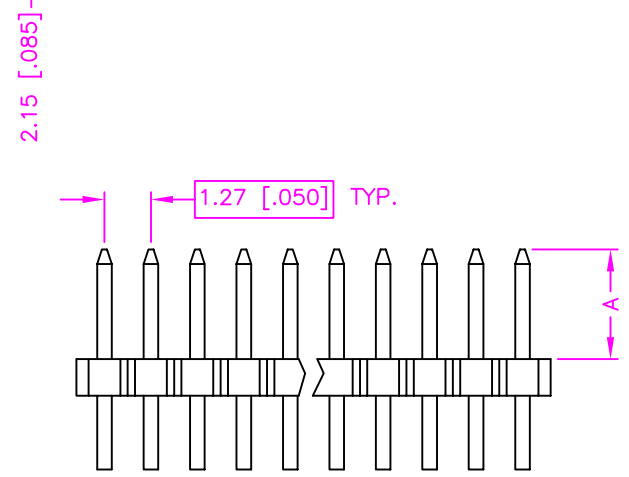
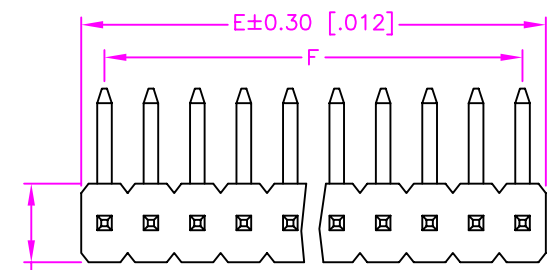
2 : .000010" GOLD

3 : .000015" GOLD

5 : .000030" GOLD

SINGLE ROW ————

NUMBER OF POSITION PER ROW ————



**RECOMMEND P.C.B. LAYOUT**  
TOP VIEW

TOLERANCE		DRAWER	<b>Astron</b> ASTRON TECHNOLOGY CORP.
.0=±0.30 [.012]		<i>RUS</i>	
.00=±0.20 [.008]		CHECK	NAME POST HEADER 1.27x1.27mm PITCH, P.C.B. MOUNT RIGHT ANGLE
.000=±.XXX		<i>Katherlin</i>	
.0000=±.		APP'D	DRAW NO. C333-3001
ANG.=±3'		<i>ALEX</i>	
		PRODUCT SPEC.	
UNITS : mm [inch]	SCALE NONE	SHEET SIZE	REV.
	A4	1 OF 1	

REV.	DESCRIPTION	DATE
—	RELEASE	Sep. 25, 2001
1	DRAW MODIFY	Jun. 23, 2003
2		

$$E = (\text{NO. OF POSITION PER ROW}) \times 1.27$$

$$F = (\text{NO. OF POSITION PER ROW} - 1) \times 1.27$$

**MATERIALS**

1. HOUSING : THERMOPLASTIC (UL 94V-0), BLACK.
2. TERMINAL : S.Q. 0.40mm COPPER ALLOY.

**SPECIFICATION**

1. CURRENT RATING : 1 AMP. MAX.
2. DIELECTRIC WITHSTANDING VOLTAGE : 600V AC R.M.S. FOR ONE MINUTE.
3. INSULATION RESISTANCE : 5000M OHMS MIN. AT 500V DC.
4. OPERATING TEMPERATURE : -55°C TO +105°C.
5. MAX. PROCESSING TEMPERATURE : 230°C FOR 30 ~ 60 SECONDS. (HI.-TEMP. PLASTIC)

**ORDER INFORMATION :**

27 - 43 \*\* \* - 2 \*\* - \* \*

SERIES CODE ————

LENGTH OPTIONS (REF. DRAW NO. C333-3003) ————

HOUSING OPTIONS ————

BLANK : POLYAMIDE (STANDARD)

H : HI.-TEMP. PLASTIC

DUAL ROWS ————

SOLDER TAIL PLATING OPTIONS

G : GOLD (STANDARD)

T : TIN

CONTACT PLATING OPTIONS

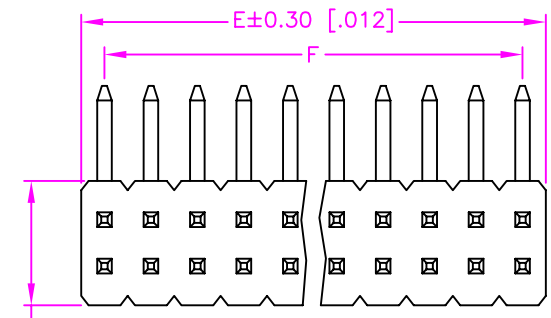
1 : GOLD FLASH (STANDARD)

2 : .000010" GOLD

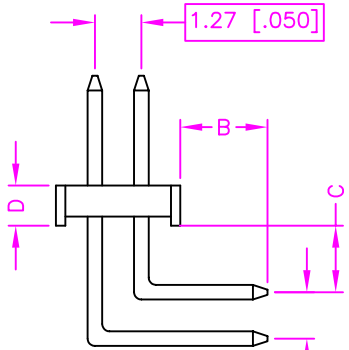
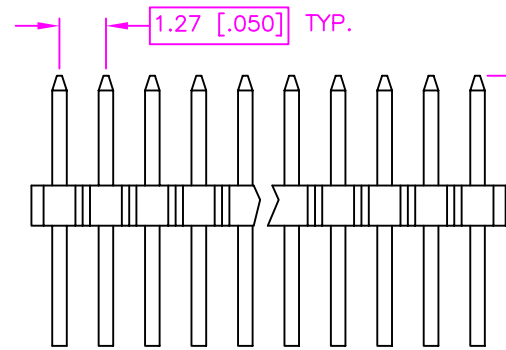
3 : .000015" GOLD

5 : .000030" GOLD

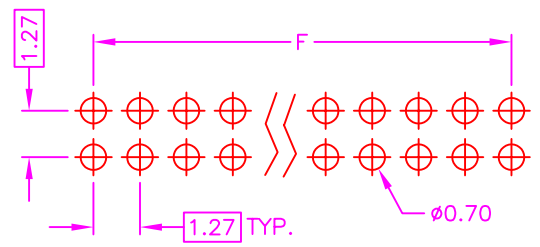
NUMBER OF POSITION PER ROW ————




3.40 [.134]



1.27 [.050]



RECOMMEND P.C.B. LAYOUT  
TOP VIEW

TOLERANCE		DRAWER	 <b>ASTRON TECHNOLOGY CORP.</b>
.0=±0.30 [.012]		<i>RUS</i>	
.00=±0.20 [.008]		CHECK <i>Katherlin</i>	
.000=±.XXX		APP'D <i>ALX</i>	NAME POST HEADER
.0000=±.		PRODUCT SPEC.	1.27x1.27mm PITCH, P.C.B. MOUNT
ANG.=±3'			RIGHT ANGLE
UNITS : mm [inch]			DRAW NO. C333-3002
SCALE NONE	SIZE A4	SHEET 1 OF 1	REV.

TYPE	A	B	C	D	USE ROWS		DATE	NOTE
					SINGLE	DUAL		
01	3.00[.118]	3.10[.122]	0.50[.020]	1.50[.059]		○	Sep. 25, 2001	
02	3.60[.142]	2.20[.087]	1.40[.055]	2.70[.106]		○	Sep. 25, 2001	
03	2.20[.087]	2.20[.087]	1.40[.055]	2.70[.106]		○	Oct. 31, 2001	
04	1.90[.075]	3.00[.118]	0.90[.035]	2.70[.106]			Dec. 25, 2001	
05	3.00[.118]	2.00[.079]	0.75[.139]	—	○		May 17, 2002	SEE C333-3004-L
06	1.90[.075]	2.80[.110]	1.15[.045]	1.50[.059]		○	Nov. 15, 2002	
07	3.00[.118]	3.10[.122]	0.50[.020]	1.00[.039]	○		Dec. 03, 2003	
08	3.60[.142]	2.20[.087]	1.40[.055]	2.00[.079]	○		Dec. 03, 2003	
09	2.20[.087]	2.20[.087]	1.20[.047]	2.50[.098]		○	Feb. 12, 2004	
10								
11								
12								
13								
14								
15								
16								
17								
18								
19								
20								
21								
22								
23								
24								
25								
26								
27								
28								
29								
30								

SINGLE ROW PLASTIC HEIGHT : 1.00 & 2.00mm  
FOR DRAW NO. : C333-3001  
DUAL ROWS FOR DRAW NO. C333-3002

TOLERANCE .0=±.X .00=±.XX .000=±.XXX .0000=±. ANG.=±3°		DRAWER <i>PUB</i>	ASTRON TECHNOLOGY CORP.
UNITS : mm [inch]		CHECK <i>Katherlin</i>	
SCALE NONE SIZE A4		APP'D <i>LION</i>	NAME LENGTH OPTIONS FOR POST HEADER 1.27x1.27mm PITCH, RIGHT ANGLE
SHEET 1 OF 1		PRODUCT SPEC. —	DRAW NO. C333-3003
REV.			